



POLO PARK
MIDDLE SCHOOL

Stallion Sentinel

AUGUST 2023

VOLUME 15 ISSUE 4

Polo Park M.S.

11901 Lake Worth Rd.
Wellington, FL 33449
tel: 561-333-5500
fax: 561-333-5505

Administration

Dr. Jennifer Galindo
Principal

Mr. Andrew Kline
Assistant Principal - 6th Grade

Ms. Annjeanette Munnings
Assistant Principal - 7th Grade

Mr. Craig Corsentino
Assistant Principal - 8th Grade

School Counselors

Ms. Julie Trujillo
6th Grade

Ms. Kris Connors
7th Grade

Ms. Naomi Soto-Coleman
8th Grade

County Web Address
www.palmbeachschools.org

School Web Address
www.poloparkmiddle.org

Mission

Polo Park Middle School will empower our students to attain their maximum potential through partnering with parents and the community to foster the understanding, cooperation, and communication skills necessary for students to become literate, productive citizens.

For the Parents, Staff, Students, and Community of Polo Park Middle School

Principal's Message

Welcome, Stallions, to another exciting year at Polo Park Middle School. For our returning Stallions, we hope you had a wonderful summer and are looking forward to continuing your middle school experience with us. For our new Stallions, we hope you have taken the time to enjoy your summer and are ready to launch your middle school journey at Polo Park. We have so much to offer our students. We offer a variety of clubs and activities, sports teams, and high level academics. We promise to give you all that we have to offer, but in return we need our students to put forth their best effort to be successful and prepared to learn.

A successful middle school experience is a family affair. We have an amazing PTSA who are highly involved and always open to new members. We are planning several parent and family events this year. So, be sure to watch our PTSA facebook and instagram posting as well as notices emailed home. Please take a moment to check SIS and ensure that we have the correct email on file. The bulk of our communications will go home this way.

Finally, please take a look though this issue of the newsletter carefully. There have been changes to the cell phone policy, dress code, ID policy, and arrival procedure. We want to be sure you know what to expect when you arrive on August 10th. I will see you soon.

Polo Park Pride

- Be Positive
- Be Disciplined
- Be Respectful
- Be Excellent
- Be Independent

Vision

Polo Park Middle School is committed to empowering students to become productive and responsible citizens with the skills needed to succeed in a diverse and global society. Students will become responsible, independent, and creative life-long learners.

If you need help translating this document, please contact Polo Park Middle School at 561-333-5500.

Creole Version:

Si w bezwen èd tradui dokiman sa a, tanpri kontakte Polo Park Middle School nan 561-333-5500.

Spanish Version:

Si necesitas ayuda para traducir este documento, favor de comunicarse con Polo Park Middle School al 561-333-5500.



For More Information, & To Stay In The Know. Check out our Polo Park Middle School PTSA Facebook.

Pet Emergency? We're open 24x7

ACCESS
Specialty Animal Hospitals®
(561) 774-8855

10465 Southern Blvd., Royal Palm Beach, FL
www.AccessVetsFlorida.com

Specialty Services Include:
Critical Care | Internal Medicine
Neurology | Surgery | Cardiology*
Oncology* | Ophthalmology*
* Services provided by independent group.



Experience the difference
ROCKY'S
ACE Hardware

TRANSFORM YOUR HOME!
LET US FIND YOUR LOOK!

BRING IN YOUR SAMPLE
AND WE'LL CREATE A
CUSTOM COLOR TO MATCH!

LEARN MORE AT
ROCKYS.COM/PAINT

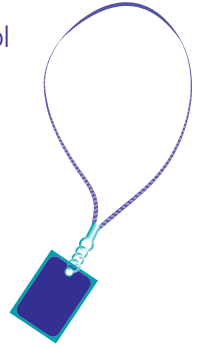
Benjamin Moore
13837 WELLINGTON TRACE - WELLINGTON, FL | (561) 753-9998



Student Identification (ID) Cards

The purpose of this policy is to ensure safety and security on the Polo Park campus for the approximately 1300 students, faculty, and staff on campus each day. Just as a driver's license authorizes driving a vehicle, a student ID card authorizes a student to be on campus. Every student must wear their school-issued ID card with a school provided lanyard at all times while on school grounds. Identification of staff and students is a safety issue and will not be compromised when it comes to campus security. ID cards help us to identify students as well as trespassers.

- All students must wear their school-issued ID card and school provided lanyard in order to:
 - Be in class
 - Move between classes and to the restroom
 - Buy lunch
 - Use the Media Center
 - Receive textbooks
 - Obtain early dismissal
 - Participate in campus activities (assemblies, sports, etc.)
 - Be on campus before or after school
- The ID card must be worn on a school provided lanyard hanging around their neck.
 - School IDs cannot be worn on a shirtsleeve, pants, outside of pockets, under a coat/jacket, or at the bottom of their shirt.
 - If a student is wearing a jacket, the lanyard must be on the outside of the jacket and visible.
 - The ID card with the appropriate lanyard must be presented to any school staff member or a person of authority when seeking student identification.
 - The front and back of the ID card must remain plain and free of stickers, markings, other photos, etc.



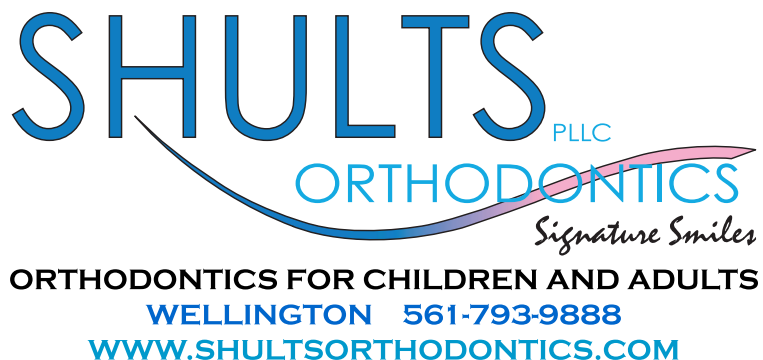
Non-adherence to school rules will result in consequences as outlined in the Student Code of Conduct.

Student Cell Phones/Earbuds

Students are permitted to use cell phones in the cafeteria, only during lunch. When classes are in session, students may not use their cell phones in any area on campus. Phones must be turned off and put away upon entering campus. Airpods or earbuds are only permitted in the cafeteria during lunch. Cell phones may not be used while in the stairwells, hallways, or any other common area with the exception of the cafeteria during lunch. Any cell phones or airpods/earbuds/headphones out and/or visible during non-designated times, will be confiscated and held until the end of the school day.

SHULTS PLLC
ORTHODONTICS
Signature Smiles

ORTHODONTICS FOR CHILDREN AND ADULTS
WELLINGTON 561-793-9888
WWW.SHULTSORTHODONTICS.COM



PTSA

PTSA welcomes all of our Polo Park families back to the new school year! We can't wait to meet our new incoming 6th grade families. We are looking forward to another great year. We are already planning some exciting events for our students and staff in the coming months. Some events to look forward to are our Annual Walk A Thon, Glow Party in November, after school PDQ sales, Candy Days for PTSA student members, spirit nights and much more. Be sure to follow our Facebook and Instagram pages at Polo Park Middle School PTSA to stay on top of important dates and information.

If you are interested in becoming a business partner to help support our school, please reach out to businesspartners@poloparkptsa.com. All business partners will have a banner displayed at the school, social media shout outs and more. This is a great opportunity to help support PTSA, which in turn benefits our students and staff.

Be sure to become a PTSA member today! We have many student perks throughout the school year for our student members, such as candy days, giveaways and more. Please use the QR code below to sign up.

Polo Park merchandise can be bought online through the website Givebacks. We are selling school shirts, hoodies and water bottles. The QR code below will take you to the website to purchase. We will be placing an order on 8/22 so get your orders in soon. Delivery will be expected the week of 9/4. This year the school is incorporating color wars between grade levels. Students will learn more about this fun in the first couple weeks of school. We have school shirts in the grade colors to purchase to make it easy for those spirit days.

- 6th grade - Grey/Silver
- 7th grade - Blue
- 8th grade - Black

If you are interested in getting involved with the PTSA in any capacity, please feel free to email volunteers@poloparkptsa.com. We would love to have you!

Best wishes to all our students and staff on a successful and enriching school year!

PTSA[®] *everychild. one voice.*[®]



Memberhub Store

Stallion Sentinel
August 2023
Published Five Times Per Year
Fulton-Holland Educational
Services Center
3300 Forest Hill Boulevard
West Palm Beach, FL 33406
Issue #4

RE/MAX Direct

Lindsey Taylor
REALTOR®

\$500 commission rebate
to Polo Park families
when you mention this ad

9164 Forest Hill Blvd. • Wellington, FL 33411
Cell: 561-758-3900 • lindseytaylor@remax.net
www.lindseytaylor.remaxagent.com

Children's Dental Place
of Wellington

Michelle S. Handel, DMD
Joseph L. Herman, DDS

General Dentist Limited
to Pediatric Dentistry

Tel: 561-790-1909
Fax: 561-790-3601
www.thechildrensdentalplace.com

1051 G State Road #7, Suite #2 • Wellington, FL 33414

LINDBURGERS

GOURMET BURGERS

13860 Wellington Trace
561-753-0555

DINE-IN CATERING PICKUP DELIVERY

Follow Us on Facebook!
[LindburgersWellington](https://www.facebook.com/LindburgersWellington)

2020 BEST OF PALM BEACH COUNTY

LINDBURGERS.COM

SOUTH FLORIDA FOOT & ANKLE CENTERS

The support you need, a step at a time.

Dr. Jonathan Cutler • Dr. Joshua Daly
Dr. Daniel Elgut • Dr. Brett Fried • Dr. Frankie Kirk

561-793-6170
fx: 561-795-3683 • www.sffac.com

Locations: Royal Palm Beach, Lake Worth,
Palm Beach Gardens and Belle Glade

K9 Solutions Dog Training

Keeping You and Your Dog Happy!

We Offer Private Obedience,
Behavior Modification &
Service Dog Training

Chris and Magda Auricchio
Owners/Founders at K9 Solutions

www.k9solutionsdogtraining.com
(561) 599-4484

FREE CRAZY COMBO

WITH ANY PURCHASE



WEST PALM BEACH
5096 Forest Hill Blvd
(561) 963-3636



Life does not have to be a struggle!

Feeling overwhelmed?
disconnected? uninspired?
Considering stopping teaching?



I am able to teach you tools to bring your
calm and passion back! I love empowering
and inspiring teachers! Do not hesitate!

Please contact me at 561-635-2431 or
at MayraBagnoli@changeandgrowth.org

Let's bring enthusiasm back into
your life and career.

EBONY'S VEGAN BAKERY

CAKE JARS • CUPCAKES • DONUTS
CUSTOM CAKES • BIRTHDAY CAKES
DESSERTS • CATERING
& MUCH MORE!

Vegan gluten-free & sugar-free options

SAMPLE BOX
116oz Carrot Cake Jar
1 Double Chocolate Chip Cookie
1 8oz Birthday Cake Jar with sprinkles
1 Gluten-Free Lemon Bundt Cake

SAMPLE BOX: Special Deal for Polo Park
Middle Family for \$24.99 including delivery!

Find your variety of options to choose
from on our website at
www.ebonysveganbakery.com or by
calling us at 786.424.8504



DESSERTS

Green Village DENTAL CARE

New Patients Welcome!

Michael Somma, DMD
General Dentist

10600 Forest Hill Blvd
Wellington, FL 33414



Scan to
Schedule
Online!

ADV57520KS | DN24971, DN25856

greenvillagedentalcare.com
561.421.8481

Media Center

From the Library Media Center

Welcome to the library media center. I hope you had a great summer break filled with fun and some great reads. This year we have lots of lunchtime activities planned and BINGO will be back by popular demand. Our Half-Way There and Million Word Clubs will continue as will our Ice Cream Extravaganza. I will have lots of library information about these activities and more when I meet with ELA classes for library orientation.

Over the summer break, I started reading this year's SSYRA books and I must say Gordon Korman's book *Linked* really kept my attention. I also enjoyed *Born Behind Bars* by Padma Venkatraman and *Long Lost* by Jacqueline West. Reading the SSYRA books can earn you brag tags and an invitation to our Ice Cream Extravaganza at the end of the year. I hope that everyone has completed the required summer reading. In addition to the required reading, I hope that students chose to participate in my summer reading challenge. Information on my summer challenge can be found at the following link Summer Reading Challenge 2023 <<https://docs.google.com/document/d/1nmcjXaGGWrqqDmTY3OWnxSCRwVfcCCqOGqx4NCT-O9E/edit?usp=sharing>> The forms for my optional challenge are due to me by August 18th. Those students completing my optional reading challenge will be invited to Dr G and Mrs.B's Phenomenal Pancake Party.

Reading will be very important this year, if any students need assistance in connecting to a great book, we can help. If you have any questions regarding the library media center and our programs, please reach out to me. I can be reached at nora.bernstein@palmbeachschools.org

Happy reading,
Mrs.B.



SCAN ME to schedule a
FREE Orthodontic
Consultation



Kevin P. McCaffrey, D.M.D., M.S.
BOARD-CERTIFIED ORTHODONTIST
SPECIALIZING EXCLUSIVELY IN INVISALIGN
AND BRACES FOR CHILDREN & ADULTS

- Extensive Knowledge and Experience with Early Orthodontic Treatment (6-10 years of age)
- Top 1% Diamond+ Invisalign Provider

☎ 561-964-5200
📍 6736 Forest Hill Blvd.,
West Palm Beach, FL 33413
✉ mo@seaofsmiles.com
🌐 www.seaofsmiles.com

Polo Park's Dress Code Policy 2023-2024 School Year

	Permitted	Not Permitted
Tops	<ul style="list-style-type: none"> • Crew Neck shirts or collared shirts • There are no restrictions regarding shirt color or pattern • School-sponsored t-shirts which are either affiliated with a PPMS sport or activity that have been approved by the administration • Shirts may be "untucked" as long as the size of the shirt is proportionate to the size of the student 	<ul style="list-style-type: none"> • Shirts that show excess skin such as shoulders, chest, or mid-drifts (tank tops, crop tops, etc) • Shirts that display any writing/graphics that refer to sex, drugs, violence, gangs, alcohol, tobacco, or sensitive topics • Shirts that are tied up in a knot or with a rubber band • Shirts with a ripped/frayed/torn edge
Bottoms	<ul style="list-style-type: none"> • Jeans/pants/shorts/skirts that fit properly at the hip and not below • Shorts, gym shorts, and skirts that are fingertip length or longer. • Sweatpants 	<ul style="list-style-type: none"> • Pants or bottoms that "sag" or reveal undergarments • Ripped/frayed/torn clothing above fingertip length. • Sleepwear/pajama pants/flannel pants • Athletic wear other than gym shorts • Leggings of any kind including flare, yoga pants, tights, biker shorts (including those showing under shorts or skirts)
Shoes	<ul style="list-style-type: none"> • Footwear consisting of full, closed-toe shoes with backs • Laces that are tied 	<ul style="list-style-type: none"> • No sandals, slides, cleats, high heels, platforms, slippers, flip flops, Crocs, or opened-toe shoes
General	<ul style="list-style-type: none"> • Sweaters, jackets, sweatshirts may be worn as needed in colder weather; however, <u>clothing worn underneath must adhere to the dress code policy</u> • Hooded sweatshirts are permitted, but the hood CANNOT cover the child's head for safety reasons. 	<ul style="list-style-type: none"> • Baseball caps, hats, bandannas, or sunglasses • Pajamas/Sleepwear of any kind • Any attire, jewelry, hair picks, or ornamentation deemed provocative, unsafe, inappropriate, or disruptive by the administration is not permitted



Better Together

WITH A PURPOSE

Join us in person
or online!

cccpalmbeach.com





THE SCHOOL DISTRICT OF PALM BEACH COUNTY SCHOOL CALENDAR 2023-2024

School Board Approved 06/01/2022

STUDENTS AND ALL EMPLOYEES EXCEPT 12-MONTH EMPLOYEES
12-MONTH EMPLOYEES
ALL OTHER EMPLOYEES SEE EMPLOYEE CALENDAR NOTES
10 HOUR DAYS FOR 12-MONTH EMPLOYEES
TEACHER WORK DAY/PROFESSIONAL DEVELOPMENT DAY
DUTY/PDD NO SCHOOL

JULY 2023					AUGUST 2023					SEPTEMBER 2023				
MONDAY	TUESDAY	WEDNESDAY	THURSDAY	FRIDAY	MONDAY	TUESDAY	WEDNESDAY	THURSDAY	FRIDAY	MONDAY	TUESDAY	WEDNESDAY	THURSDAY	FRIDAY
3	4 HOLIDAY	5	6	7 District Closed		1	2	3	4 Pre-School for Teachers					1
10	11	12	13	14 District Closed	7 Pre-School for Teachers	8 Pre-School for Teachers	9 Pre-School for Teachers	10 First Day of School for Students	11	4 HOLIDAY	5	6	7	8
17	18	19	20	21 District Closed	14	15	16	17	18	11	12	13	14	15
24	25	26	27	28 District Closed	21	22	23	24	25	18	19	20	21	22
31					28	29	30	31		25 HOLIDAY	26	27	28	29
OCTOBER 2023					NOVEMBER 2023					DECEMBER 2023				
MONDAY	TUESDAY	WEDNESDAY	THURSDAY	FRIDAY	MONDAY	TUESDAY	WEDNESDAY	THURSDAY	FRIDAY	MONDAY	TUESDAY	WEDNESDAY	THURSDAY	FRIDAY
2	3	4	5	6			1 DUTY/PDD NO SCHOOL	2 Begin 2nd Elementary Trimester	3					1
9	10	11	12 End 1st Nine Weeks	13 DUTY/PDD NO SCHOOL	6	7	8	9	10	4	5	6	7	8
16 Begin 2nd Nine Weeks	17	18	19	20	13	14	15	16	17	11	12	13	14	15
23	24	25	26	27	20 HOLIDAY	21 HOLIDAY	22 HOLIDAY	23 HOLIDAY	24 HOLIDAY	18	19	20	21	22 End 2nd Nine Weeks
30	31 End 1st Elementary Trimester				27	28	29	30		25 HOLIDAY	26 HOLIDAY	27 HOLIDAY	28 HOLIDAY	29 HOLIDAY
JANUARY 2024					FEBRUARY 2024					MARCH 2024				
MONDAY	TUESDAY	WEDNESDAY	THURSDAY	FRIDAY	MONDAY	TUESDAY	WEDNESDAY	THURSDAY	FRIDAY	MONDAY	TUESDAY	WEDNESDAY	THURSDAY	FRIDAY
1 HOLIDAY	2 HOLIDAY	3 HOLIDAY	4 HOLIDAY	5 HOLIDAY				1	2					1
8 DUTY/PDD NO SCHOOL	9 Begin 3rd Nine Weeks	10	11	12	5	6	7	8	9	4	5	6	7	8
15 HOLIDAY	16	17	18	19	12	13	14	15	16 End 2nd Elementary Trimester	11	12	13	14	15 End 3rd Nine Weeks
22	23	24	25	26	19 DUTY/PDD NO SCHOOL	20 Begin 3rd Elementary Trimester	21	22	23	18 HOLIDAY	19 HOLIDAY	20 HOLIDAY	21 HOLIDAY	22 District Closed
29	30	31			26	27	28	29		25 DUTY/PDD NO SCHOOL	26 Begin 4th Nine Weeks	27	28	29 HOLIDAY

THE CROWE TEAM

YOUR RESIDENT REAL ESTATE SPECIALISTS



Whether you're ready to sell or buy a home,
call The Crowe Team for all your real estate needs!



Brent Crowe
REALTOR®

Raquel Crowe

REALTOR®

Hablo Español

561.798.3955

sold@sellingwellington.com

GreatPalmBeachHomes.com



THE SCHOOL DISTRICT OF PALM BEACH COUNTY

SCHOOL CALENDAR 2023-2024

School Board Approved 06/01/2022

STUDENTS AND ALL EMPLOYEES EXCEPT 12-MONTH EMPLOYEES
 12-MONTH EMPLOYEES (ALL OTHER EMPLOYEES SEE EMPLOYEE CALENDAR NOTES)
 10 HOUR DAYS FOR 12-MONTH EMPLOYEES
 DUTY/PDD NO SCHOOL TEACHER WORK DAY/PROFESSIONAL DEVELOPMENT DAY NO SCHOOL

APRIL 2024					MAY 2024					JUNE 2024									
MONDAY	TUESDAY	WEDNESDAY	THURSDAY	FRIDAY	MONDAY	TUESDAY	WEDNESDAY	THURSDAY	FRIDAY	MONDAY	TUESDAY	WEDNESDAY	THURSDAY	FRIDAY					
1	2	3	4	5			1	2	3		3		4	5	6	District Closed	7		
8	9	 HOLIDAY	10	11	12	6	7	8	9	10		10		11	12	13	14	District Closed	
15	16		17	18	19	13	14	15	16	17		17		18	19	20	21	District Closed	
22	23	24	25	26		20	21	22	23	24		24		25	26	27	28	District Closed	
29	30					 HOLIDAY	27	28	29	30	Last Day of School for Students							District Closed	
HOLIDAYS					EMERGENCY MAKE-UP DAYS (EMD)					EMPLOYEE CONTRACT PERIODS									
DATE		HOLIDAY				Emergency Make-Up days (EMD) will be at the discretion of the Superintendent in accordance with the state statute for student instructional time.					Selected Teachers (T)								
Jul 4, 2023		Independence Day		X	X														
Sept 4, 2023		Labor Day		X	X	TEACHER WORK DAYS/ALL-DAY IN-SERVICE NO SCHOOL FOR STUDENTS					Teachers & Assistant Principals (T & I)								
Sept 25, 2023		Fall Holiday		X															
Nov 20 - 24, 2023		Thanksgiving Break		X	X	SECONDARY SCHOOLS STUDENTS' ATTENDANCE DAYS					Please see Employee Calendar Notes on the District's Hub. (http://hub.palmbeachschools.org/all_employees/school_district_calendar)								
Dec 25, 2023 - Jan 3, 2024		Winter Break		X	X														
Jan 4-5, 2024		Winter Break		X															
Jan 15, 2024		Dr. Martin Luther King Jr. Day		X	X	SECONDARY SCHOOLS STUDENTS' ATTENDANCE DAYS													
Mar 18-22, 2024		Spring Break		X															
Mar 29, 2024		Spring Holiday		X		SECONDARY SCHOOLS STUDENTS' ATTENDANCE DAYS													
Apr 10, 2024		Spring Holiday		X															
May 27, 2024		Memorial Day		X	X	SECONDARY SCHOOLS STUDENTS' ATTENDANCE DAYS													
ELEMENTARY SCHOOLS STUDENTS' ATTENDANCE DAYS					SECONDARY SCHOOLS STUDENTS' ATTENDANCE DAYS						ELEMENTARY SCHOOLS REPORT CARD DISTRIBUTION DATES								
PERIOD		BEGIN		END		# DAYS		PERIOD		BEGIN		END		# DAYS					
1 st Trimester		Aug 10, 2023		Oct 31, 2023		56		1 st Quarter		Aug 10, 2023		Oct 12, 2023		44					
2 nd Trimester		Nov 2, 2023		Feb 16, 2024		59		2 nd Quarter		Oct 16, 2023		Dec 22, 2023		44					
3 rd Trimester		Feb 20, 2024		May 30, 2024		65		3 rd Quarter		Jan 9, 2024		Mar 15, 2024		47					
								4 th Quarter		Mar 26, 2024		May 30, 2024		45					
ELEMENTARY SCHOOLS REPORT CARD DISTRIBUTION DATES					SECONDARY SCHOOLS REPORT CARD DISTRIBUTION DATES					All Other Employees (NT)									
PERIOD		ELEMENTARY SCHOOLS			PERIOD		SECONDARY SCHOOLS												
1 st Trimester		TBD			1 st Quarter		TBD												
2 nd Trimester																			
3 rd Trimester																			
TEACHERS' & ASST. PRINCIPALS' PAID HOLIDAYS					SECONDARY SEMESTERS														
Sept 4, 2023		Jan 1, 2024			PERIOD		BEGIN		END		# DAYS								
Nov 23, 2023		Jan 15, 2024			1 st Semester		Aug 10, 2023		Dec 22, 2023		88								
Dec 25, 2023		May 27, 2024			2 nd Semester		Jan 9, 2024		May 30, 2024		92								

Pursuant to S. 1011.60(3)(d) FS, the following six legal holidays are paid holidays for all regular full-time 12-month employees not represented by CTA: Independence Day, Labor Day, Thanksgiving Day, New Year's Day, Dr. Martin Luther King, Jr. Day and Memorial Day. In addition, some employees may have other paid holidays that are considered not to be legal holidays, as provided in their Labor Agreements and this School Calendar.

We Need You

to bring this newsletter to press

Your advertisement helps fund the newsletter and at the SAME TIME your business gets community recognition and exposure.

Help Polo Park Middle School by
 advertising in the *Stallion Sentinel*!

Nora Bernstein • nora.bernstein@palmbeachschools.org





Stallion Sentinel

*For the Parents, Staff, Students,
and Community of Polo Park
Middle School*

Polo Park Middle School
11901 Lake Worth Rd.
Wellington, FL 33449

Non-Profit Organization
U.S. Postage
PAID
Orlando, FL
Permit #2346

8

2023-2024 BELL SCHEDULE



1

9:30-10:18

2

10:23-11:09

3

11:14-12:00

4

12:05-2:18

Lunch	Lunch Time	Instruction Time	Academic Reinforcement
A	12:23 - 12:58	1:03 - 2:18	12:05-12:23
B	1:03 - 1:38	12:23-12:58 & 1:43- 2:18	12:05-12:23
C	1:43 - 2:18	12:23-1:38	12:05-12:23

5

2:23-3:09

6

3:14-4:05



Inside this issue...

Student ID Cards
PTSA
Media Center

Dress Code
School Calendar
and more!