



VOLUME 4 ISSUE 3
MARCH 2020

TERRIER TIMES

A MESSAGE FROM THE PRINCIPAL

Dear Terrier families,

The African proverb, "It takes a village to raise a child", means that an entire community of people must interact with children for those children to experience and grow in a safe and healthy environment. When I think of that proverb, I can't help but think about our community, our wonderful PCMS community! Now granted, I believe our school community of teachers, support staff, and administrators are among the best in the district, but I have to acknowledge what happens beyond the walls of Port Charlotte Middle School is just as important. You see, it's also our community of parents who really make a difference! Our parents have figured out that it's just not the community of educators inside the walls of our school that make a difference, but understand that their role as parents is just as important.

Really, the heart of where I want to go with this is, our school community also relies heavily on what goes on at the district level! Without their support or level of expertise we would not be an "A" school for the 2nd year in a row. Without their hard work and dedication to our children, we would not be the highest performing school in the district. So, I can honestly and without hesitation, say that everyone person at our district level, right on up to the Superintendent, Steve Dionisio, including our wonderful School Board consider our students, their students! Sometimes, it's easy for us to blame the district for lack of funding or personnel or anything other thing you can think of, but in reality, I've seen firsthand the hard work of our district leaders and how well they support every school. There's no doubt, I can say it starts at the top, with Superintendent Dionisio, and it sure does, but I can also say it happens at every level of our district leadership team. They are part of our "Village" and without them our students would not flourish. Thank you to our Superintendent and our Assistant Superintendents, Cheryl Edwards, Dr. Desjardins, Dr. Keegan, Jerry Olivo, and everyone who works in their departments for your support and leadership!

I can't really say enough about our staff here at PCMS! They are 100% committed to making sure our "Village" of students grow academically and into mature young adults. Sometimes we don't have the easiest students but our teachers don't look for barriers, they look for solutions and find a way to reach every child. That is what it is about! That is why we're an "A" school for the second time in a row. While the state may base that school grade our performance on the state assessments, which are very challenging, I base my "A" school status on what we do every day with our students. Every day, our staff welcomes every student with open arms and nurtures and challenges them to be the very best they can be. That is why we will always be an "A" school no matter what we look like in the eyes of the state according to the state assessments. Thank you to my staff and the entire "Village" who help our students succeed each day!



Respectfully,
John LeClair,
Principal



ADMINISTRATION

Principal

John LeClair

Assistant Principals

Matthew Kunder

Tara Whisenant

Dean

Jon Hock

Guidance Counselors

Eric Grzechowiak

Alexa Manaskie

ESE Liaison

Marjorie Johnson

Social Worker

Brittany Baumhardt

School Resource Officer

Deputy Mings

23000 Midway Blvd.
Port Charlotte FL 33952

Phone: 941-255-7460

Fax: 941-255-7469

Attendance Line: 941-255-7467

Office Hours: 8:00 - 4:30





BAND FUNDRAISING PARTY



TEST TAKING TIPS FOR PARENTS

'Terrier Times'
 March 2020 • Issue # 3
 Published Four Times Per Year
 Charlotte County Public Schools
 1445 Education Way
 Port Charlotte, FL 33948-1052

Tip #1: Make attendance a priority, especially on days that you know standardized testing will be administered. Though it's important for your student to be in school every day, making sure he's there when the test is taken helps to ensure he won't lose more learning time because he has to make up a test during school. Make a note of test days on the calendar. That way both you and your student know what's coming and will be prepared.

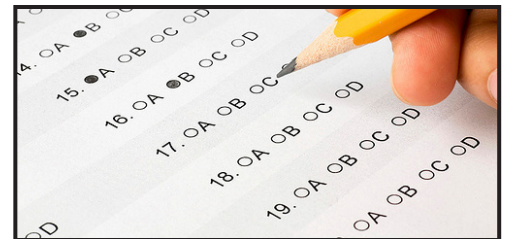
Tip #2: Monitor your student's progress and check for understanding. Subjects like science, social studies and math often have cumulative exams at the end of learning units. If your student is struggling with something now, it won't be easy for her to have time to try again to learn it just before the test.

Tip #3: Set a reasonable bedtime and stick to it. Eight hours of sleep is preferable. Many parents underestimate the importance of a rested mind and body. Tired children have difficulty focusing and are easily flustered by challenges.

Tip #4: Make sure your child has enough time to wake up fully before he has to go to school. Just as rest is important, so is having enough time to get his or her brain engaged and in gear. If a test is first thing in the morning, he/she can't afford to spend the first hour of school groggy and unfocused.

Tip #5: Provide a high-protein, healthy, low-sugar breakfast for your student. Kids learn better on full stomachs, but if their stomachs are full of sugary, heavy foods that will make them sleepy or slightly queasy, it's not much better than an empty stomach.

Tip #6: Talk to your student about how the test went, what he/she did well and what he/she would have done differently. Think of it as a mini-debriefing or brainstorming session. You can talk about test-taking strategies after the fact as easily as beforehand and these discussions will improve performance on future tests.



PCMS FOOD PANTRY



Pay Minimum Income Tax

Coast Financial Advisors, Inc.

Catherine L. Gerace, EA, ATA

For Appointment

629-8927

23188 Freedom Avenue
Charlotte Harbor, FL 33980



Group &
Government
Rates
Available



LAQUINTA

BY WYNDHAM

941-979-4200 • www.lq.com
812 Kings Highway • Port Charlotte, FL 33980



dairyqueen.com



941-743-8665

909-C Kings Hwy. • Port Charlotte, FL 33980

JANUARY STUDENTS OF THE MONTH

FEBRUARY STUDENTS OF THE MONTH



James Green, Keira Faber, Kira Tuthill,
Caleb Schulz, Catharine Emery,
Rohan Sojan



Benjamin Ellner, Elisia McGroarty,
Sophie Davis, Drew Stanley, Alea Jones,
Thomas Luc

OUT OF FIELD TEACHERS

The following teachers are currently teaching Out of Field:

- Dan Livermore
- Brianna Cramer-Sona
- Diane Conrad
- Heather Gillespie

4.0 LUNCHEON FOR QUARTER 2



COMPLETE FSA TESTING SCHEDULE 2020

Date	Test	Paper or Computer	Session	Length
Wednesday April 1, 2020	6th FSA Writing	PBT	**	120 Min
Wednesday April 1, 2020	7th/ 8th FSA Writing	CBT	**	120 Min
Tuesday May 5, 2020	6th ELA Reading	PBT	Session 1	85 Min
Wednesday May 6, 2020	6th ELA Reading	PBT	Session 2	85 Min
Thursday May 7, 2020	6th Math	PBT	Session 1	60 Min
Friday May 8, 2020	6th Math	PBT	Session 2 & 3	120 Min
Monday May 11, 2020	7th & 8th ELA Reading	CBT	Session 1	85 Min
Tuesday May 12, 2020	8th FCAT Science	PBT	Session 1 & 2	160 Min
Wednesday May 13, 2020	7th & 8th ELA Reading	CBT	Session 2	85 Min
Thursday May 14, 2020	7th & 8th Math and Algebra EOC	CBT	Session 1	60 Min
Friday May 15, 2020	7th & 8th Math and Algebra EOC	CBT	Sessions 2 & 3	120 Min
Tuesday May 19, 2020	7th Civics EOC	CBT	**	160 Min

NPS NORTHSIDE Psychiatric Services

SPECIALIZED PROGRAMS for children, teens, & adults:

- Individual & Group Therapy
- Psychiatric Services
- Parent/Child Conflict
- Substance Assessments & Counseling
- Home & School Based Therapy Programs
- Bullying
- Teleservices
- Trauma Therapy

24 Hour Crisis Center
941-575-0222

1032 Tami Trail # 7, Port Charlotte • 941-639-8300



Whitesides ORTHODONTICS

Joseph Whitesides, DDS

941-627-2011

3 convenient locations:
North Port • Port Charlotte • Punta Gorda



FREE LANGUAGE ARTS FSA PREP

After-school tutoring is available on Wednesday and Thursday after school until 4:55 pm and Thursday mornings from 8 am – 8:30 am. Students need to sign up in the Media Center (24 hours in advance).



FREE MATH AFTER SCHOOL TUTORING

Parents & Students, do you know that after-school MATH tutoring is offered FREE at PCMS? Tutoring is held Tuesday and Wednesday afternoons until 4:45 and Thursday mornings from 8 am - 9 am. To ensure a successful program, we ask that all students sign-up in advance (in the appropriate classroom) and arrive at tutoring prepared. They should bring work to complete and/or questions about concepts with which they are struggling.

HIDDEN IN PLAIN SIGHT

Thank you to Jamie Hibbard for our "Hidden in Plain Sight" Display AND for the amazing career night!




**Gulf Pointe
Surgery Center**

941-235-5800
www.gulfpointesurgerycenter.com

21260 Olean Blvd., Ste. 105 • Port Charlotte, FL 33952

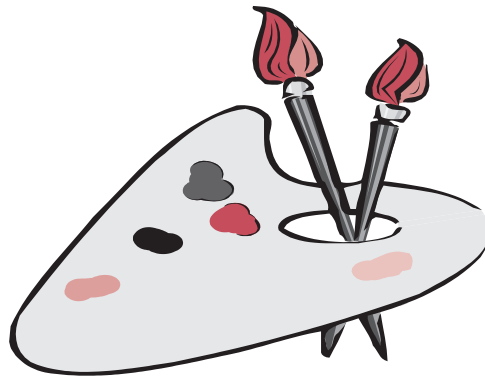
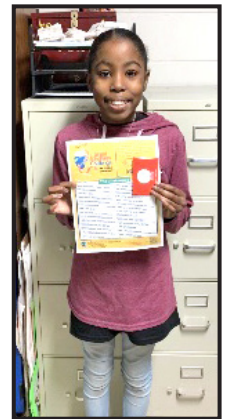
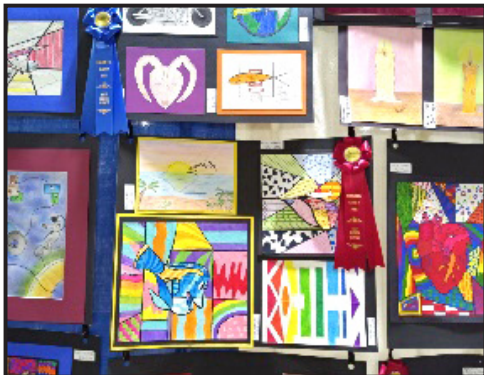


**Your
Local
Sponsor
Advertisers**



PCMS ART WAS WELL REPRESENTED AT THE COUNTY FAIR!

KINDNESS CHALLENGE



CAMP BOW WOW
 DOGGY DAY CARE & BOARDING

FIRST DAY FREE!

CAMP BOW WOW® PORT CHARLOTTE
 941-875-9410 • campbowwow.com/port-charlotte

*LEGAL WOOF: Offer valid only at Port Charlotte location. Valid only for interview day. New customers only. Camper must meet entrance requirements. Other restrictions apply.

PIZZA
PAPA JOHN'S
 LOCALLY OWNED & OPERATED

Buy One Pizza at Regular Menu Price and Get a 2nd of Equal or Lesser Value FREE
 Order Online at papajohns.com! Promo Code: EJVBOGO

24123 Peachland Blvd., A8 Port Charlotte, FL 33980 **941-235-7272**

Helgenro & Liou
 pediatrics

DR. BENJAMIN HELGEMO
 DR. WEN LIU
 KRISTY CAREY, ARNP
 ASHLEY REID, PA
 KENDRA GERACE, PNP
 ALEXANDER MOLINA, ARNP

2040 Tamiami Trl Unit C | Pt. Charlotte, FL 33948
 Phone: (941) 629-4464 | Fax: (941) 629-4701

New Patients Welcome | Most Insurances Accepted
www.helgenropediatrics.com

BOX TOPS LABELS

Eventually the Box Tops program will become digital-only. Participating brands are starting to change their packaging from a traditional Box Tops clip to the new Box Top label. If you see this label, use the new Box Tops app to scan your receipt. **Box Tops are still worth 10¢ each for your school.** The app will find participating products purchased at any store and instantly add cash to your school's earnings online.

NO MORE CLIPPING



SCAN YOUR RECEIPT

SEE HOW AT BTFE.COM

TITLE 1 INFORMATION

All reports for our Title 1 program are available, upon request, in our Family Center, in the lobby of our front office, and on our website, under About Us - Title I. There you will find the link below.

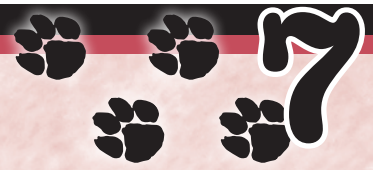
TITLE 1 PUBLISHED REPORTS & OTHER RESOURCES

SPAR: School Accountability Report link available on our PCMS school website on Title I page http://doeweb-prd.doe.state.fl.us/eds/nclbpar/year1617/nclb1617.cfm?dist_schl=8_131.



CONGRATULATIONS TO PCMS COUNTY TRACK CHAMPIONS!





NEW SCORE BOARD!



CONGRATULATIONS ON CHAMPIONSHIP SEASONS FOR BASKETBALL!

STAFF KICKBALL

Coach Renne coached our staff kickball team to 2nd place in the district where we lost to a tough Murdock Middle team in the championship game. Everyone had a great time!



GIRL'S VOLLEYBALL

Congratulations to the girl's volleyball team and their coaches, Coach MacDonald and Coach McGee for coming in 3rd in the playoffs!



A few spots are left!



We need you!

Advertise in the Terrier Times!

This is a wonderful way for your company to get community recognition and exposure, and at the same time help support your local schools!

Kimberly Pruey
kimberly.pruey@yourcharlotteschools.net
Port Charlotte Middle School



Medical Pavilion Clinic

PRIMARY CARE & INTERNAL MEDICINE
David S. Ballestas, MD • Michael Lawson, ARNP • Natalie Ruland, ARNP

Monday-Friday 8am-7pm • Saturday 9am-3pm (November-May)

FOR ALL YOUR MINOR MEDICAL PROBLEMS
Physical Exams • Women's Health • ECHO's
Minor Surgical Procedures • X-Rays • Stress Test
Diabetes • Hypertension • Impotence
Allergies Arthritis • Laboratory • Workman's Comp

www.medicalpavilionclinic.net

629-9190 | 2525 Harbor Blvd., Ste. 101 & 102
After Hours Call 629-7593 | Port Charlotte, FL
(Look for Red Awning)





23000 Midway Blvd.
Port Charlotte FL 33952

Non Profit Organization
U. S. Postage Paid
Orlando, FL
Permit# 2346

WE LOVE INVOLVED PARENTS!

The positive effects of parent involvement do not just benefit the students. Parents, teachers, and schools come out ahead, too. Children with parents who are involved in their education are more likely to:

- Earn better grades.
- Score higher on tests.
- Attend school regularly.
- Have better social skills.
- Show improved behavior.
- Be more positive in their attitude toward school.
- Complete homework assignments.
- Graduate and continue their education.

Parents who are involved in their children's education are more likely to:

- Be more confident at school.
- Be more confident in themselves as parents and in their abilities to help their children learn.
- Be held in higher esteem by teachers.
- Continue their own education.

Schools with highly involved parents are more likely to have:

- Better morale among teachers.
- Higher ratings of teachers by parents.
- More support from families.
- A better reputation in the community.

Two major studies by Anne Henderson in the 1990s and 2000s showed that parent involvement has a hugely positive effect on student achievement and other indicators of success. These studies were so influential that researchers today are still referencing them. More recently, a study published in 2012 by researchers at North Carolina State University, Brigham Young University, and the University of California, Irvine, reinforced Henderson's earlier findings-and also found that family involvement has an even bigger effect on positive academic performance than the quality of the school building.



Port Charlotte Middle
TERRIERS



twitter 

PC Middle School
@PCMSTERRIERS

