

Wolverine WATCH

For the Parents, Staff, and Students of Wellington High School

Volume 21 / Issue 1

August 2022

Beliefs

- Students' learning needs are the primary focus of all decisions impacting the work of the school because each student is a valued individual with unique physical, social, emotional, and intellectual needs.
- A safe and physically comfortable environment promotes student learning.
- Teachers, administrators, parents, students, and the community share the responsibility for advancing the school's mission.
- Students learn in different ways and will be provided with a variety of instructional approaches to support their learning styles.
- Cultural diversity can increase students' understanding of different peoples and cultures.
- Students need to not only demonstrate their understanding of essential knowledge and skills but also to be actively involved in solving problems and producing quality work.
- A student's self-esteem is enhanced by positive relationships and mutual respect among and between students & staff.

Go Wolverines!!! #WHSReady to Educate, Affirm & Inspire

Good Evening Wolverines! We are so excited to welcome you back to school! We have so many exciting opportunities coming your way! It is going to be an AMAZING year!

Wellington High School has an incredibly strong tradition of excellence in academics, athletics, the arts, technology and community service. Our plan for this school year is to not only reinforce all of the skills above, but to help our students do well in their lives beyond school. It is a new year with new opportunities! It is my immediate goal to ensure EVERY STUDENT is involved in some sort of extracurricular activity. I hope to see you all out there involved in something whether it be Athletics, Clubs, Honor Societies, Community Involvement and Service! I want you to WANT to be here and not just go through the motions. Come to our New Student Orientation, along with our 9th grade Invasion, to learn about many of the clubs and sports we have to offer. There is definitely something for everyone!

Every student at Wellington High School deserves the best possible education whether it be through our amazing Choice Academies, AICE, AP classes, technological innovations, fine/performing arts, vocational programs and even "outside the box" alternative programs! We have the most talented faculty and staff here at Wellington. We have worked hard this summer to match and/or exceed that talent by hiring additional educators, counselors and staff to maximize our ability to help you, our amazing students, excel!

We cannot do anything above without some proper supports. There will be a renewed focus at Wellington High School on "Social Emotional Learning" and support. This will be reinforced through the "Wolverine Wellness Center" where we have Licensed therapists to provide counseling and handle crisis situations. We once again have a College and Career Counselor to work with our students in preparing mentally and academically for post-secondary education and employment. We will incorporate SEL lessons within our classes regularly so our teachers can build relationships with our students, and our students with each other in a safe environment. Our grade level support centers will continue which include an Assistant Principal, a Dean of students and a minimum of 2 school counselors for each grade level.

While providing social and emotional support, you will notice several changes to our security procedures. **Parents who plan to drive their student to school** will enter the campus via the bus loop from the North, on Greenview Shores, with a right turn only. You will exit onto Greenview Shores, to the South, again, right turn only. Please take time now to plan your morning and afternoon routes. Parents/guardians will not be allowed to make any left hand turns to and from the new student "drop off/pick up" location. (I will send out a detailed map as we get closer to school starting)

The main entrance (near the marquee) will be utilized by Wellington High School Faculty and Staff along

Dates to Remember!

**New Student /
Parent Orientation**
Thursday, August 4

Two Sessions:
12PM (virtual) or 5:30 PM
in the Theater

Students' First Day
Wednesday, August 10
7:30 AM- 2:50 PM

Open House
Tuesday, September 13

Mission Statement

Wellington Community High School seeks to provide a safe environment conducive to promoting lifelong learners and productive citizens who contribute to the community as a whole.



School District of Palm Beach County's Nondiscrimination Policy: The School District of Palm Beach County prohibits discrimination against students, employees, and applicants on the basis of religion, race, ethnicity, national origin, color, sex, marital status, age, parental status and disability in any of its educational activities and services and employment practices.

To download a pdf version of this newsletter, go to www.academypublishing.com.

...continues on next page

GO WOLVERINES!!! #WHSLEGACY

Superintendent of Schools

Mike Burke

School Board Members

Frank Barbieri, Jr. Esq., Board Chair

Karen M. Brill, Vice-Chair

Marcia Andrews

Alexandria Ayala

Barbara McQuinn

Dr. Debra Robinson

Erica Whitfield

Central Region Superintendent

Valerie Haines

Principal

Cara Hayden

Assistant Principal, Administration

Dr. E. Calvente-Torres

Assistant Principals, Grade

Level Support Center

Magda Dominique

Tonya Grant

Mike Kozlowski

Dr. Eric Moore

John Rejc

Assistant Principal, Community

School

Chris Romano

Academy Program

Erik Wilkinson

Athletic Director

Robert Callovi

School Police Officer

Enrique Bassas

School Nurse

Lisa Close

DATA Counselor

Christine Ranieri

2022-2023 School Counselors

Laquania Avant

Megan Donelley

Danielle Fairclough

Travis Gray

Rosemyrtle Jean

Randall Panckeri

Terry Roberto

Andrew Saperstein

Julia Saye

Claudia Gallardo

(ESOL)

AICE Coordinator

Mierka Drucker



From the Desk of Your School Nurse

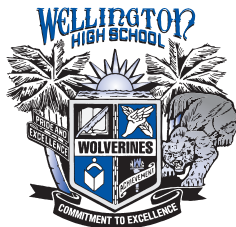
STUDENT VAPING: A HUGE IMPACT ON HEALTH OF OUR YOUTHS

“Vaping is a gateway for nicotine dependence for today’s youth. Statistics show an increase in vaping in middle school aged children by 50 percent and high school aged children by 80 percent in 2018. The use of vaping brings on new and unknown risks. The risks include unknown diseases (not just cancer) of the lungs and heart as well as any other organs affected by exposure to nicotine, hard metals, and the possibility of other harmful chemicals.”

— Dr. David Shersher, thoracic, lung and esophageal surgeon, MD Anderson Cancer Center at Cooper University Hospital

The following link is a great resource from the CDC:

https://www.cdc.gov/tobacco/basic_information/e-cigarettes/index.htm



Principal’s Message continues...

with scheduled visitors. All visitors will enter through our Single Point of Entry at the main entrance. Please read over procedures in our SY21-22 Standard Operating Procedures (coming soon!). Additional gates have been installed to close gaps on the campus with increased security measures and supervision staff to keep your child safe and secure while they are on our campus. We ask that you take a moment to download the “Fortify Florida App” on your phones in order to ensure you and your children feel comfortable with the anonymous ability to “See Something and Say Something”. All reports immediately notify school officials, local law enforcement and state officials about suspicious activity.

Finally, parents, guardians and community members.... We need your help! Help us build our school spirit! I want to encourage you to come out and support our Wolverines in all areas beyond homework! We welcome you at all of our sporting events, shows and special activities to support all our students have to offer. Our students are so incredibly talented; we must support them in all of their endeavors! Additionally, we welcome you during the school day to serve as volunteers and committee members in areas of school beautification, school efficiency, SAC, safety and security, and public/community relations. Help us build our reputation and legacy. Your support for our students and faculty means the world to them and their sense of school and self pride. The more we work together, as a team, the more successful our students will become. I look forward to our conversations, feedback and support as we bring Wellington High School back together. Feel free to reach out to me via email anytime. It is going to be a great year and I wish everyone luck in their endeavors for the school year 2022-2023!!!

Your Proud Principal!
Ms. Cara A. Hayden



“Wolverine Watch”

August 2022 • Issue #1

Published Five Times Per Year

Wellington Community High School

2101 Greenview Shores Blvd.

Wellington, FL 33414



KEVIN P. McCAFFREY, D.M.D., M.S.

561.964.5200
WWW.SEAOFMILES.COM
6736 FOREST HILL BLVD.
WEST PALM BEACH, FL 33413
COMPLIMENTARY CONSULTATIONS!
BOARD-CERTIFIED ORTHODONTIST



JUST ONE MORE REASON TO SMILE!



EDUCATIONAL EXCELLENCE

EXPERT COLLEGE PLANNING & TUTORING

College Applications & Essays • SAT / ACT Tutoring

Our Students are Accepted to the University of Florida and other competitive colleges

See Our College Acceptances, SAT/ACT Score Increases & Complete Service List
www.educationalexcellence.info

CONTACT US TODAY FOR A FREE INTRODUCTORY APPOINTMENT

30+ YEARS EXPERIENCE **Nancy Polin** 561-502-1954 | nancy@educationalexcellence.info

Student Attendance

Wellington High School's philosophy is that school attendance is essential to student learning. Absenteeism, excused or unexcused, regardless of the reason, negatively affects the continuity of the learning process.

A student is considered absent when he/she misses 50% or more of the class period. To excuse an absence, students must bring their excuse note to the **Grade Level Support Center** between 7:00 AM and 7:22 AM following the absence. **Faxes and phone calls will not be accepted.** **Grade Level Support Center** will not accept notes after 7:22 AM to avoid tardiness to class. There will be no exceptions. Students who do not have a 1st period must bring their excuse note to the **Grade Level Support Center** prior to the start of their first class following the absence.

The following information is to be included on notes from parents.

- Printed First and Last Name of the Student
- Student Identification Number
- Dates missed including specific periods
- Reason for absence (see note below)
- Telephone Number for Parent/Guardian
- Parent/Guardian Signature

Per state law and district policy, students who accumulate more than 10% of absences per semester, will be required to pass the semester exam in order to receive credit for the course. Also, a student between the ages of 14 and 18 who accumulates 15 unexcused absences will have his/her driver's license suspended by the Department of Highway Safety and Motor Vehicles.

Procedures Edition

While we don't have animals in the classroom for the Equine/Pre-Veterinary Academy, the 9th-11th grade Vet students are required to complete twenty contact hours per year working with animals. The hours provide students with the ability to choose the animals they want to work with such as birds, dogs, cats, goats, exotics or horses. The exciting part is that our Vet students work with local business partners, animal rescues, horse farms and vet offices. Students learn to bottle feed kittens, foster pets, feed and care for horses and farm animals, train dogs and work in adoption events. They learn compassion, responsibility and the commitment needed for animal care in all areas, beyond vet medicine. They are exposed to animal science careers. Many of our students often get their "foot in the door" to employment at these facilities. Want to be a part of it? Ask us how you can join our Vet program classes!



WHS Web Site

Please take the time to check out our dynamic school web site:

<https://welh.palmbeachschools.org/>

This is an excellent way to keep students, parents, and staff updated on school events, policies, and news. Selected textbooks are also available on-line. Information can be found on sports, activities, clubs, news, student handbooks, and technology tips. Included in the technology section, one can find our internet guidelines and explanations of policies. Take advantage of our site and explore the areas to assist you in making the high school experience the best ever!



PICTURE YOUR FUTURE AT KEISER UNIVERSITY
A.S. Radiologic Technology



561.471.6000
KeiserUniversity.edu

Keiser University is a private, not-for-profit university

Join us for family fun!

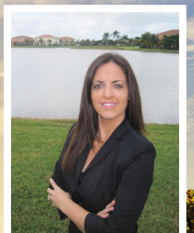


wanderersclubwellington.com
561.795.3501

RE/MAX
Direct

Lindsey Taylor
REALTOR®

\$500 commission rebate
to WHS families
when you mention this ad



9164 Forest Hill Blvd. • Wellington, FL 33411
Cell: 561-758-3900 • lindseytaylor@remax.net
www.lindseytaylor.remaxagent.com



Parking Pass Information

Beginning on Monday, July 18, 2022 you will be able to apply for a parking permit. The application will be posted on the Wellington High School website and will be submitted through a Google form. We will be reviewing applications by grade levels following the schedule below.

SENIORS: JULY 18-19TH
JUNIORS: JULY 20-21ST
SOPHOMORES: JULY 22-25TH

PRICE

Yearly Pass: \$70.00
Half Year Pass (2nd Semester ONLY): \$40.00
(Half year pricing opens after winter break)

Lost/Replacement Decal: \$10

Must be paid by check and brought to the 11th grade office, Dr. Moore or Mrs. Abreu

Please do NOT pay for the parking pass until you have been approved!

Beginning July 18th, if you require any assistance pertaining to parking, please email: Eric.Moore@palmbeachschools.org or Yessenia.Abreu@palmbeachschools.org.
https://welh.palmbeachschools.org/school_info/parking_pass_info

SAC

Wellington High School welcomes your involvement on our School Advisory Council (SAC). SAC is an essential line of communication between school staff, parents, students, and community liaisons. The SAC serves as a mechanism for participatory management and shared decision-making. The primary goal of SAC is to improve the education for all students. SAC members help establish educational priorities, assess school needs, and identify resources to meet those needs. SAC decisions are instrumental to the educational experience to students at WHS.

We encourage you to commit to attend SAC meetings on the third Tuesday of each month of the school year at 6:00pm in the Media Center. The first meeting will be held on August 16th. Check the school's website in the "Students and Parents" section or please contact Daniel Stechschulte for more information at Daniel.Stechschulte@palmbeachschools.org.

2022-2023: WELLINGTON COMMUNITY HIGH SCHOOL PARKING CONTRACT



To qualify and maintain a Wellington Community High School Parking permit all parking policies, procedures and rules must be adhered to throughout the year. Please read and understand ALL rules policies as they pertain to your privilege to park on campus.

ALL STUDENTS MUST HAVE...

- MINIMUM 2.25 GPA
- MINIMUM OF 10 COMMUNITY SERVICE HOURS
- MAINTAIN 90% ATTENDANCE
- NO OBLIGATIONS

Minimum Credit Requirements	10th Grade	11th Grade	12th Grade
1st Semester	7	13	21
2nd Semester	10	16	Met ALL testing requirements for graduation

In addition to the District Rules and regulations, the following rules violations may result in the loss of a student's parking privilege and/or disciplinary action. Please make sure that all rules are adhered to for continuance of parking on campus.

Any of the following infractions may result in parking privileges either temporarily or permanently revoked. The cost of the parking permit WILL NOT be refunded.

1. Leaving Campus without **SIGNING OUT** is NOT permitted.
2. No Drugs, alcohol or weapons of any kind are allowed on campus or stored in vehicles while on school grounds.
3. Unauthorized vehicles are not permitted on campus.
4. Handicap permits must be in the DRIVERS NAME and they must have parking application on file before parking on campus.
5. Any inappropriate articles (bumper sticker, flags, etc.) on vehicles are NOT permitted.
6. Boots cannot be removed from any car by unauthorized personnel.
7. The parking decal/hang-tag must be on display and visible through the front windshield and the permit number easily viewed.
8. Violation of any traffic or criminal laws and/or School District school rules.
9. Discourteous, reckless, or defiant road behavior.
10. Exceeding speed limit by 5 MPH on campus.
11. Unsafe acts, (i.e. riding on car hoods, bumpers, radiators, fenders, spinning wheels, burning rubber, running boards, etc.) will result in suspension of parking privileges.
12. Students are not permitted to remain in parking lots or to sit in parked vehicles before school, during lunch or at the completion of the school day.
13. Students are to park in their designated parking lots only. Students are not permitted to park in staff parking lot, visitor lots or in NON- Designated parking areas.
14. Any student caught duplicating or falsifying a parking permit or transferring the permit to another person will lose their parking permit privileges.
15. Any audio device or instruments from within the motor vehicle cannot be louder than necessary for the convenient hearing by persons inside the vehicle in areas adjoining the school.
16. Students shall not use cell phones or other wireless devices while driving.
17. Operators of motor vehicles, and passengers must use seat belts or child restraining devices as required by law.
18. No student is allowed to ride in the back of a pick-up or flat-bed truck.
19. If an accident occurs on campus and is not reported immediately to the administration by the student(s) involved, the student(s) will lose their parking privileges for the duration of the school year and/or duration of their enrollment at the school.
20. **Enter the Student parking lot at the student entrance prior to 7:35AM. After 7:35AM, please use the main entrance.**

Any of the following infractions may result in the loss of campus parking privileges either temporarily or permanently. The cost of the parking permit WILL NOT be refunded.

Please do NOT pay for the parking pass UNTIL you have been approved!
If payment is made in advance of approval and the application is denied, please note, no refunds will be issued.

PRICING

Yearly Pass: \$70.00

Half Year Pass (2nd Semester ONLY): \$40.00

Half year pricing opens after winter break

Lost/ Replacement Decal: \$10



School-Wide Positive Behavior Support

We have implemented two positive behavior programs at Wellington Community High School: Wellington Way and Character Counts. Students are being recognized for the positive choices they are making while they are on campus. Please make sure your child is following our Universal Guidelines every day they are on campus.

Driving Privilege

Students between the ages of 14 and 18 who have accumulated 15 unexcused absences within a period of 90 calendar days and failed to satisfy attendance requirements will be ineligible for the State of Florida driving privilege. Drivers' licenses will be suspended or not issued to students with 15 or more unexcused absences.

Parent Alert

Please double check that your child has not blocked the school phone number from your home number. On a number of occasions where an emergency required us to make a quick parental contact, we were unable to provide this service to you.

Obligations, Books, Chromebooks Loan, Trust Responsibility

Wellington High School is committed to providing each student with necessary materials, textbooks and Chromebooks. Materials, textbooks and Chromebooks are on loan from the school and must be returned or replaced at the end of the term or school year. It is the responsibility of the student and parent/guardian to replace an item if it is lost, misplaced, or stolen. In some cases, an obligation will be applied if an item is damaged.

When a student has an obligation to the school, the student will not be permitted to participate in any extra-curricular activity (i.e. tryouts, athletics, clubs, honor societies, performances, prom, homecoming, etc.). In addition, seniors will not be permitted to participate in any senior activities or the graduation ceremony with an outstanding obligation. If a student locates a book or item that had previously been reported lost and for which restitution was made, the school will issue a refund if the student produces a receipt for money paid. Refunds are issued by the bookkeeper. Obligations may be paid in the front office during lunch.

Parent Volunteer Opportunities

The Parent Volunteer Opportunities program provides a mechanism for parents to be actively involved in the center environment and a way to become more familiar with procedures and activities while enhancing and enjoying the fellowship of children and staff. On-line registration is available in the main office. Make sure you sign-in and sign-out to earn volunteer hours for the Palm Beach County Gold, Silver and Five-Star School Award.

PARENT INVOLVEMENT

Research shows that children are more successful when their parents are involved in their classroom experience. Volunteering in your child's class is one way to help meet this goal. Please take the time to determine where you would like to volunteer this year. Your time and efforts will be well spent while enriching the children's learning experience.

CLASSROOM AND PROJECT VOLUNTEER OPPORTUNITIES

If you can spare ANY time to offer assistance to our huge operation here at Wellington High School, call 561-795-4901. There is always a need, (e.g. Parents Assisting Teachers (PAT), parent copying materials, communications, packet assembly, event volunteers, etc..) Your response and offer to help would be greatly appreciated.

SOUTH FLORIDA FOOT & ANKLE CENTERS

The support you need, a step at a time.

Dr. Jonathan Cutler • Dr. Joshua Daly
Dr. Daniel Elgut • Dr. Brett Fried • Dr. Frankie Kirk

561-793-6170
fx: 561-795-3683 • www.sffac.com

Locations: Royal Palm Beach, Lake Worth, Jupiter, Palm Beach Gardens and Belle Glade

EARLY CHILDHOOD EDUCATION

SOUTHEASTERN COLLEGE

561.433.2330
SEC.EDU

SERVING WESTERN PALM BEACH COUNTY SINCE 1973

DATTILE PLUMBING INC.

561-793-7484

THE BEST IN THE WEST

dattileplumbing@yahoo.com
www.dattileplumbing.com
CFC057769

Centres for Oral & Maxillofacial Surgery

1051 S. State Road 7, Suite 1
Wellington, FL 33414
Tel: 561-790-0206
Fax: 561-795-5445

Wisdom Teeth
Dental Implants
Oral Pathology

Michael G. Mauck, DMD
Board Certified

www.drmauckomfs.com

Safety Council
of Palm Beach County, Inc.

- ✓ Traffic School
Online or Live Classes
- ✓ Required Learners Permit Class
for New Drivers – Online
- ✓ Learn to Drive
Behind the Wheel Education
- ✓ Motorcycle Classes
Learn to Ride

safetycouncilpbc.org • (561)845-8233

Debate Good News

WELCOME BACK 2022-23

The nationally recognized Wellington Speech & Debate Team's annual "Meet & Greet" for new students will take place at Wellington High School as part of New Student Orientation on Thursday, August 4. This will allow incoming students and their parents to meet Director of Speech & Debate Paul Gaba and many of the Red Dawn Debaters' experienced members, and learn about speech, debate, and competitive acting events, as well as discover what the 2022-23 championship season has in store for the program.

As the world has seen from the past few years, there is a need to communicate eloquently and persuasively, with solid logic and reputable sources to back viable argumentation. These are among the skills students learn in a competitive high school speech and debate program. Taking debate as a class can help all students prepare for the rigors of AICE courses and life after high school. We look forward to meeting, greeting, and hopefully encouraging you to sign up for debate (if you have not done so already)!

Please feel free to contact Coach Gaba at paul.gaba@palmbeachschools.org, via Twitter (@RedDawnDebaters), via Instagram (RedDawnDebaters), or through the team's Facebook page (www.facebook.com/wellingtondebate) for more information.



GALLOP TO YOUR GOALS IN EQUINE STUDIES AND EQUESTRIAN COMPETITION

B.S. Biomedical Sciences with Equine Studies
B.A. Business Administration with Equine Studies



561.478.5500
KeiserUniversity.edu

Keiser University is a private, not-for-profit university



Parent Guide for Medications at School

The following is required before any medication can be taken by or administered to a child on school grounds:

1



A new **Authorization for Medication / Treatment Form** is required each school year and for any changes to the current order during the school year.



The form (available in the physician's office) must be completed by the **prescribing physician** for all medication.

The form must also have the **parent signature** completed in order for medication to be administered.



2



Prescribed and Over-the-Counter Medications:



Prescribed medications must be in the **original container with a pharmacy label, not expired and matching the current physician's order**. When filling your prescription, request the pharmacy labels' expiration date state, **"See Manufacturer's Medication Expiration Date."**

Over-the-counter medications must also be in the **original unopened container, not expired and labeled with the child's name**.



Medication must be **delivered to the school by an adult**, not your child. A medication count and co-signature for the delivery and receipt of the medication will be required.

A **current photo** of the child is required for identification purposes and will be attached to the medication record. **The photo should be delivered with the physician's order and medication.**



3



School Health
Health Care District Palm Beach County

ESOL Registrations

by Rossana Ponce

To register an ESOL student, please call the Grade Level Support Office at (561) 795-4915 starting August 4th to schedule an appointment. Thank you!

Para inscribir a un estudiante ESOL, favor de llamar a la Oficina de apoyo de nivel de grado al (561) 795-4915 a partir del 4 de agosto para hacer una cita. ¡Gracias!

Pou enskripsyon nan ESOL elèv yo, tanpri rele Biwo Sipò Nivo Klas a nan (561) 795-4915 kòmanse Out 4 nan orè yon randevou. Mès!

Wolverine Café Update

2022-2023

WELCOME BACK, WOLVERINES!

Breakfast is served daily starting at 7:00am in the cafe

ALL Meals are Free this school year!

We will be resuming ringing in all items that are on your plate. Please Be Patient!

Please have you badge out & ready to scan when you arrive at the cashier station in order for the line to move as fast as possible

ALL 2nd Meals will be PAID Ala Carte

\$1.80 to \$2.25 for an extra Entrée
\$.50 for Extra Juice, fruit, milk or Veggie

Ala Carte Snacks and Drinks are \$.50 to \$2.00

Online Payments are available and are encouraged through School Cash online or www.palmbeachschools.org/sfs. If you have any questions regarding on-line prepayments please contact the Parent Center support by phone at 866-961-1803.

We are looking forward to serving you.

Thank you,
Angie, café manager

795-4925

KALUZ RESTAURANT
2025 Wellington Green Drive
561-784-5500
www.kaluzrestaurant.com



BE JOB READY South UNIVERSITY
West Palm Beach, FL

PREPARE FOR A CAREER AFTER HIGH SCHOOL.

Earn a degree in Business, Nursing, Healthcare, or Technology.

Call 855.209.0347



Programs, credential levels, technology, and scheduling options vary by school and are subject to change. Not all programs are available to residents of all U.S. states. South University, West Palm Beach, University Centre, 9801 Belvedere Rd., Royal Palm Beach, FL 33411. © 2022 South University. All rights reserved.

Athletic Department News

The Wellington High School Athletic Department would like to welcome everyone to another year, with high expectations for the 2022-2023 athletic programs. This year we will no longer be accepting paper athletic packets but instead will have transitioned to an online platform for our Athletic Eligibility Requirements.

ATHLETIC ELIGIBILITY PROCEDURES

Any student interested in playing a sport at Wellington High School must submit all necessary information through **Aktivate.com**. On that site, parents/guardians will create an account, where they will be able to register their students for any sport they would like to participate in that we offer. This will also be where you will access any necessary documents that will need to be completed then uploaded, including forms that must be notarized and an Athletic Physical Form (School Entry Physical Forms are NOT accepted for Athletics)

Any student who has not previously played a sport at Wellington High School must bring in their Original Birth Certificate to be verified and a copy of the Birth Certificate for us to keep for in our records.

Students must have no obligations on their record and maintain a 2.0 cumulative GPA to participate in athletics.

Students will receive an email from our Athletic Director, Robert Callovi, once they are cleared to participate.

For more information about a particular sport, you should contact that team's coach. On the school's site, you can find a list of all coaches with links to their emails as well as Google Classroom Codes for students to join.

If you have any questions about Athletics, feel free to email the Athletic Director as well.

HELPFUL WEBSITES:

- www.aktivate.com for Athletic Eligibility Registration
- www.FHSAA.com for Florida High School Athletic Association information.
- www.welh.palmbeachschools.org for Wellington High School information



FIND YOUR POWER



Schedule a Campus Tour • Attend a Family Friendly Virtual Info Session • Request Program Information

Get Started!

www.palmbeachstate.edu | 561-967-7222





Join The Wrestling Team

Anyone interested in joining the wrestling team should attend a brief meeting after school on Friday, August 19th in room 4-105. The 2021-22 boy's wrestling team won the District tournament for the 9th consecutive year, finished 2nd in the State, qualified 12 athletes for the FHSAA State Finals, and earned state all-academic team honors with a team GPA of a 3.2!

We also started our first ever girl's wrestling team and they finished as district champions, county champions, qualified five girls for the FSHAA State Finals, and earned state all-academic team honors with a team GPA of a 3.4!

We are looking for athletes of all sizes and never make cuts at any level! No experience is needed. Please email with any questions: travis.gray@palmbeachschools.org

GO WOLVERINES



Guidance Department News

PALM BEACH COUNTY Childhood Immunization Requirements SCHOOL YEAR 2022-2023

Florida Certificate of Immunization, Form DH 680 is the only document that the schools are permitted to accept as proof of immunization.

KINDERGARTEN – 12TH GRADE

- Diphtheria/Tetanus/Pertussis (DTaP) – 5 doses
- Polio (OPV or IPV) – 3, 4 or 5 doses (the last one after age 4 for K)
- Measles/Mumps/Rubella – 2 doses (usually given as 2 doses MMR)
- Hepatitis B (Hep B) – 3 doses

KINDERGARTEN – 11TH GRADE

- Varicella – 2 doses or provider verification of Chickenpox disease history on form DH 680

12TH GRADE

- Varicella – 1 dose or provider verification of Chickenpox disease history on form DH 680

7TH – 12TH GRADES

- Tetanus/Diphtheria/Pertussis booster (Tdap) – 1 dose

PRE-K PROGRAMS (AGE APPROPRIATE DOSES AS INDICATED)

- Diphtheria/Tetanus/Pertussis (DTaP)
- Polio (OPV or IPV)
- Measles/Mumps/Rubella (MMR)
- Haemophilus Influenza type B (Hib)
- Hepatitis B (Hep B)
- Varicella (VZV)

LICENSED CHILD CARE FACILITIES AND FAMILY DAY CARE HOMES

Children entering or attending Licensed Child Care Facilities and Family Day Care Homes shall have received as many of the following age-appropriate immunizations as are medically indicated in accordance with the current Recommended Childhood Immunization Schedule:

- Diphtheria/Tetanus/Pertussis (DTaP)
- Polio (OPV or IPV)
- Measles/Mumps/Rubella
- Varicella
- Haemophilus Influenzae type B (Hib)
- Pneumococcal Conjugate (Prevnar) for children age 2 to 59 months
- Hepatitis B (Hep B) (Recommended)

WELCOME TO GRADE LEVEL SUPPORT CENTERS FOR 9TH & 10TH GRADERS AND ALPHABETICAL SERVICE FOR OUR 11TH & 12TH GRADERS!!

This year we had an excellent year assisting our Wellington community through student support centers and will continue with grade specific support centers for 9th and 10th grades. The assistant principals, deans, and counselors at both grade levels will work tirelessly to ensure that all underclassmen are graduation ready as they head into each new year.

We will continue alpha breakdown in grades 11th & 12th to provide a 2-year seamless, knowledgeable advising process for all. Students and parents will walk through the 2-year post-secondary preparation process from beginning to end with a single counselor beginning the junior year. Additionally, Ms. Jean is our college & career counselor. She will work directly with all senior students and parents as they navigate the college, scholarship, and financial aid application processes, as well as offer virtual workshops and informational sessions throughout the fall.

We are excited about the enhancements and know that the needs of our students, parents, and faculty will be more readily met in the coming year. We want to celebrate the success of our grade-level student support centers and thank the students and parents for working with us as we identify the best way to meet the academic, social, and emotional needs of our students.

Student Support Grade Level Contacts:

9TH GRADE	10TH GRADE	11TH GRADE & 12TH GRADES
Assistant Principal Mike Kozlowski Office: Maria Wolfson (561) 795-4933	Assistant Principal Magda Dominique Office: Debra Martelli (561) 795-4920	Assistant Principal - 11th Dr. Eric Moore & Tonya Grant Assistant Principal - 12th Dr. Elizabeth Calvente-Torres Office 11th Grade: Dalia Khalil (561)795-4915 Office 12th Grade: Yvette Thomas -(561) 791-9323
Discipline Dean James Krupa	Discipline Dean Lee Tanton	Discipline Dean Daniel Stechschulte
School Counselors A – L Megan Donnelley M – Z Laquania Avant	School Counselors A – L Travis Gray M – Z Julia Saye	School Counselors A – D Andrew Saperstein E – I 11th grade, E – L 12th grade Danielle Fairclough J – Ri 11th grade, M – R 12th grade Randall Panckeri Ro – Z 11th grade, S – Z 12th grade Terry Roberto

Mrs. Claudia Gallardo – E.S.O.L Counselor for all English Speakers of Other Languages
Ms. Rosemyrtle Jean– College & Career Counselor

STUDENT SCHEDULES

Students are to report to their 1st period class the first day of school. Students will be directed to their 1st period of the day and receive their permanent schedule.

SCHEDULE CHANGES

- Schedule changes cannot be made on the first day of school as ALL counselors are still registering new students.
- Students must follow the schedule given to them in 1st period on the first day of school. If a schedule is not available in 1st period, the student is to report to the Media Center.
- If a student does not have a 1st or 2nd period class due to senior privilege, or dual enrollment, their schedule will be in the media center.

Students who require a schedule change because credit in a given course has already been earned, a prerequisite to a course has not been taken, or a student is missing a period, they will complete a schedule change request form, and their counselor will call them as received.

NOTICE: If you have requested an FLVS course and need a counselor's approval, counselors will be monitoring FLVS requests regularly.

IMPORTANT: No schedule changes will be made until after the 11-day count of school.





COLLEGE CORNER

SENIOR YEAR

- College Workshop: August 29-September 1st
 - Parent College Workshop: August 31st at 6:00pm
- College workshops will take place every month to assist seniors with the college application process. **For any questions, please contact Ms. Jean- Rosemyrtle. louis@palmbeachschools.org.**

SENIOR ADVICE:

- Start College Applications early
- Begin drafting a resume include: academic, athletic, and extracurricular activities
- Take the SAT and/or ACT early
- Attend college fairs
- Participate in college information sessions
- Connect with your guidance counselor
- Research financial aid and scholarship options
- If an application requires a counselor recommendation, please fill out the "Counselor Recommendation Request Form." This form can be found on the "Counselor Corner" webpage on the Wellington High School website. Allow two weeks for the recommendation to be written. **Do not send a recommendation letter to the college if it is not required.**

NOTE: Florida's public universities **DO NOT** require letters of recommendation. Remember to follow the application directions closely and do not send information that is not requested. It will slow down the application process at the college campus. College applications for the upcoming freshmen class are usually available in July/August.

Special congratulations to our summer graduates!



GRADE FORGIVENESS INFORMATION

Students may repeat any course taken in grades 9-12 for a grade forgiveness **IF** earned a grade of "F" or "D" in a course. **Note:** High school courses taken in middle school may be forgiven if a grade of "C", "D", or "F" is earned.

Please contact your student's school counselor for more information.



- All students are required to turn in to their grade level support secretary **20 hours** of community service documented with a non-profit organization **by the end of junior year.**
- The community service log sheet can be found on the school's website or in the student support centers.
- If you are taking voluntary public service during the day you are required to complete 75 community service hours per semester; this is a for credit course.

IMPORTANT: Students needing a parking pass or senior privilege must have 20 documented volunteer hours, be on track for graduation with credits and test requirements and have earned their online credit (unless earning an A.I.C.E. diploma).



BRIGHT FUTURES SCHOLARSHIP

Seniors may begin to apply for the Bright Futures Scholarship after October 1st, 2022.

Type	16 High School Course Credits ¹	High School Weighted Bright Futures GPA	College Entrance Exams by High School Graduation Year (ACT/SAT*)	Service Hours
FAS	4 - English <i>(three must include substantial writing)</i> 4 - Mathematics <i>(at or above the Algebra I level)</i> 3 - Natural Science <i>(two must have substantial laboratory)</i>	3.50	2021-22 Graduates: 29/1330 2022-23 Graduates: 29/1330	100 hours
FMS	3 - Social Science 2 - World Language <i>(sequential, in same language)</i>	3.00	2021-22 Graduates: 25/1210 2022-23 Graduates: 25/1210	75 hours

Please visit www.floridastudentfinancialaid.org/ssfad/bf/ for more information.

*Students may also earn the Bright Futures scholarship via the AICE diploma and completing 100 hours of community service.



DUAL ENROLLMENT AT PALM BEACH STATE COLLEGE AND FLORIDA ATLANTIC UNIVERSITY

In order to participate in dual enrollment, students must have a minimum unweighted GPA of 3.0 and have "college ready test scores" in English, math, and reading on the ACT, SAT or PERT.

Students must also fill out an admissions application and attend a mandatory advising session through PBSC. All students should plan to meet with their school counselor to discuss the above procedures.

Dual Enrollment Required Test Scores

PSAT or SAT:	Reading: 24	Writing: 25	Math: 24
ACT:	English: 17	Reading: 19	Math: 19
PERT:	Reading: 106	Writing: 103	Math: 114

SCHOOL COUNSELOR DIRECTORY

For any questions during the school year, please feel free to contact your school counselor directly. utilize the qr code to set an appointment or send an email!





Wolverine WATCH

Non-Profit Organization
US Postage PAID
Orlando, FL
Permit No. 2346

Wellington Community High School
2101 Greenview Shores Blvd.
Wellington, FL 33414

To Addressee or Current Resident

Inside This Issue

Wolverine Cafe News

Join the Wrestling Team

Debate Good News

ESOL Registration

and more!

