



WOLVERINE WATCH

For the Parents, Staff, and Students of Wellington High School

Volume 22 / Issue 1

August 2023

BELIEFS

- ◆ Students' learning needs are the primary focus of all decisions impacting the work of the school because each student is a valued individual with unique physical, social, emotional, and intellectual needs.
- ◆ A safe and physically comfortable environment promotes student learning.
- ◆ Teachers, administrators, parents, students, and the community share the responsibility for advancing the school's mission.
- ◆ Students learn in different ways and will be provided with a variety of instructional approaches to support their learning styles.
- ◆ Cultural diversity can increase students' understanding of different peoples and cultures.
- ◆ Students need to not only demonstrate their understanding of essential knowledge and skills but also to be actively involved in solving problems and producing quality work.
- ◆ A student's self-esteem is enhanced by positive relationships and mutual respect among and between students & staff.

MISSION STATEMENT

Wellington Community High School seeks to provide a safe environment conducive to promoting lifelong learners and productive citizens who contribute to the community as a whole.

GO WOLVERINES!!!

#WHSREADY TO EDUCATE, AFFIRM & INSPIRE

Good Evening Wolverines! We are so excited to welcome you back to school! We have so many exciting opportunities coming your way! It is going to be an AMAZING year!

Wellington High School has an incredibly strong tradition of excellence in academics, athletics, the arts, technology and community service. Our plan for this school year is to not only reinforce all of the skills above, but to help our students do well in their lives beyond school. It is a new year with new opportunities! It is my immediate goal to ensure EVERY STUDENT is involved in some sort of extracurricular activity. I hope to see you all out there involved in something whether it be Athletics, Clubs, Honor Societies, Community Involvement and Service! I want you to WANT to be here and not just go through the motions. Come to our New Student Orientation, along with our 9th grade Invasion, to learn about many of the clubs and sports we have to offer. There is definitely something for everyone!

Every student at Wellington High School deserves the best possible education whether it be through our amazing Choice Academies, AICE, AP classes, technological innovations, fine/performing arts, vocational programs and even "outside the box" alternative programs! We have the most talented faculty and staff here at Wellington. We have worked hard this summer to match and/or exceed that talent by hiring additional educators, counselors and staff to maximize our ability to help you, our amazing students, excel!

We cannot do anything above without some proper supports. There will be a renewed focus at Wellington High School on "Social Emotional Learning" and support. This will be reinforced through the "Wolverine Wellness Center" where we have licensed therapists to provide counseling and handle crisis situations. We once again have a College and Career Counselor to work with our students in preparing mentally and academically for post-secondary education and employment. We will incorporate SEL lessons within our classes regularly so our teachers can build relationships with our students, and our students with each other in a safe environment. Our grade level support centers will continue which include an Assistant Principal, a Dean of students and a minimum of 2 school counselors for each grade level.

While providing social and emotional support, please note security and safety procedures for this upcoming year:

Parents who plan to drive their student to school will enter the campus via the bus loop from the North, on Greenview Shores, with a right turn only. You will exit onto Greenview Shores, to the South, again, right turn only. Please take time now to plan your morning and afternoon routes. Parents/guardians will not be allowed to make any left hand turns to and from the student "drop off/pick up" location. (I will send

DATES TO REMEMBER!

NEW STUDENT / PARENT ORIENTATION

Friday, August 4

Two Sessions:

12PM (virtual) or 5:30 PM
in the Theater

STUDENTS' FIRST DAY

Thursday, August 10

7:30 AM – 2:50 PM

OPEN HOUSE

Tuesday, September 12

...continues on next page

GO WOLVERINES!!!

#WHSLEGACY

To download a pdf version of this newsletter, go to www.academypublishing.com.

School District of Palm Beach County's Nondiscrimination Policy: The School District of Palm Beach County prohibits discrimination against students, employees, and applicants on the basis of religion, race, ethnicity, national origin, color, sex, marital status, age, parental status and disability in any of its educational activities and services and employment practices.



Superintendent of Schools

Mike Burke

School Board Members

Frank Barbieri, Jr. Esq., Board Chair

Karen M. Brill, Vice-Chair

Marcia Andrews

Alexandria Ayala

Edwin Ferguson, Esq.

Barbara McQuinn

Erica Whitfield

Central Region Superintendent

Valerie Haines

Principal

Cara Hayden

Assistant Principal, Administration

Dr. E. Calvente-Torres

Assistant Principals, Grade

Level Support Center

Magda Dominique

Tonya Grant

Mike Kozlowski

Dr. Eric Moore

John Rejc

Assistant Principal, Community

School

Chris Romano

Academy Program

Vanessa Douglass

Athletic Director

Robert Callovi

School Nurse

Alex Molina

DATA Counselor

Christine Ranieri

2023-2024 School Counselors

Laquania Avant

Megan Donelley

Danielle Fairclough

Travis Gray

Rosemyrtle Jean

Randall Panckeri

Terry Roberto

Andrew Saperstein

Julia Saye

Claudia Gallardo (ESOL)

AICE Coordinator

Mierka Drucker



"Wolverine Watch"

August 2023 • Issue #1

Published Five Times Per Year

Wellington Community High School

2101 Greenview Shores Blvd.

Wellington, FL 33414

Principal's Message continues...

out a detailed map as we get closer to school starting)

The main entrance (near the marquee) is utilized by Wellington High School Faculty and Staff along with scheduled visitors. All visitors will enter through our Single Point of Entry at the main entrance. Please read over procedures in our **SY23-24 Standard Operating Procedures** (coming soon!). Additional gates have been installed to close gaps on the campus with increased security measures and supervision staff to keep your child safe and secure while they are on our campus. We ask that you take a moment to download the "Fortify Florida App" on your phones in order to ensure you and your children feel comfortable with the anonymous ability to "See Something and Say Something". All reports immediately notify school officials, local law enforcement and state officials about suspicious activity.

Finally, parents, guardians and community members.... We need your help! Help us build our school spirit! I want to encourage you to come out and support our Wolverines in all areas beyond homework! We welcome you at all of our sporting events, shows and special activities to support all our students have to offer. Our students are so incredibly talented; we must support them in all of their endeavors! Additionally, we welcome you during the school day to serve as volunteers and committee members in areas of school beautification, school efficiency, SAC, PTSA, safety and security, and public/community relations. Help us build our reputation and legacy. Tell your family, friends, neighbors and anyone you can find why you are PROUD TO BE A WOLVERINE!!! Let's create our own story and get it out there! Feel free to reach out to our Volunteer Coordinator, Ms. Jennifer Diaz or our Athletic Director, Mr. Robert Callovi if you have any questions or ideas! (jennifer.m.diaz@palmbeachschools.org and robert.callovi@palmbeachschools.org)

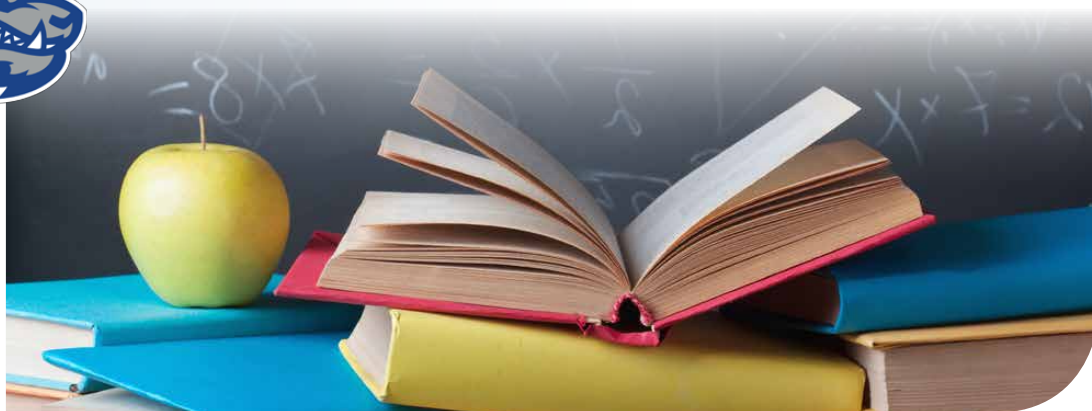
Your support for our students and faculty means the world to them and their sense of school and self pride. The more we work together, as a team, the more successful our students will become. I look forward to our conversations, feedback and support as we bring Wellington High School back together. Feel free to reach out to me via email anytime. It is going to be a great year and I wish everyone luck in their endeavors for the school year 2023-2024!!!

Your Proud Principal!.....Ms. Cara A. Hayden

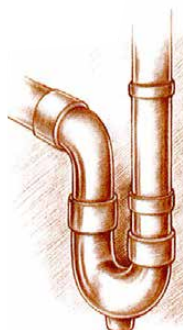
Stay Tuned!

Standard Operating Procedures and Expectations will be communicated next week!

Enjoy your summer!



SERVING WESTERN PALM BEACH COUNTY SINCE 1973



**DATTILE
PLUMBING
INC.**

561-793-7484

THE BEST IN THE WEST

dattileplumbing@yahoo.com
www.dattileplumbing.com

CFC057769

Join us for family fun!



wanderersclubwellington.com

561.795.3501

SOUTH FLORIDA
**FOOT &
ANKLE
CENTERS**



The support you need, a step at a time.

Dr. Jonathan Cutler • Dr. Joshua Daly
Dr. Daniel Elgut • Dr. Brett Fried • Dr. Frankie Kirk

561-793-6170

fx: 561-795-3683 • www.sffac.com

Locations: Royal Palm Beach, Lake Worth,
Palm Beach Gardens and Belle Glade



WELLINGTON HIGH SCHOOL PTSA

Last year, we successfully chartered Wellington High School's first PTSA. We would like to welcome our parents, teachers, students, and staff to join us as members this year in support of our school.

"PTA's mission is to make every child's potential a reality by engaging and empowering families and communities to advocate for all children."

-National PTA

Use the QR code to join and follow our socials for important updates.

Amy Strassel - PTSA President

Mike Costello - PTSA Treasurer

Missy Schubert - PTSA Secretary

2023 CAPACITY WATCH LIST

School Board Policy 5.01, Student Assignment, calls for preparation of an annual "Capacity Watch List". The Capacity Watch List identifies schools where enrollment is projected to reach or exceed 100 percent of capacity in the next five (5) years. The Capacity Watch List is available on our school's website by clicking the "District" menu and then the "Reports & Publications" link, or via the Student Enrollment & Demographics website at: www.pbc.schoolzones.info and then clicking "Enrollment Projections and Reports". **WHS** is projected to be at or above the 100% threshold within the next five years.



GO WOLVERINES



ANSWER YOUR CALLING

OCCUPATIONAL THERAPY ASSISTANT | NURSING | MEDICAL ASSISTING | CHIROPRACTIC MEDICINE



KEISER
UNIVERSITY

561.471.6000

KeiserUniversity.edu

Wellington HS ATHLETICS

ATHLETIC NEWS

The Wellington High School Athletic Department would like to welcome everyone to another year, with high expectations for the 2023-2024 athletic programs. We look forward to having another amazing year for our athletes filled with success both on and off the field.

ATHLETIC PAPERWORK REGISTRATION

Any student interested in participating in Athletics next school year should complete the Athletic Registration through Aktivite.com.

Parents/guardians will create an account for themselves. After adding basic information, parents/guardians will be able to begin registration for each of their students. To make the process as easy as possible, you will need to have the following forms completed to be uploaded:

1. Athletic Physical - FHSA EL2 Form (**School Entry Forms are NOT accepted for Athletics**)
2. Athletic Eligibility for High School Students - Form 1588 (Must be Notarized)
3. Student Medical Consent for Athletics - Form 1589 (Must be Notarized)
4. Interscholastic Athletic Insurance - Form 2608 (Must submit \$10 Tryout Fee Receipt from SchoolCashOnline.com with the form)
5. Certificates for the three required NFHS Courses- These must be completed each school year
 - a. Concussion in Sports
 - b. Sudden Cardiac Arrest
 - c. Heat Illness Prevention

All of those forms can be found through **Aktivite** once you begin a registration.

All Athletes Participating in a sport will also be required to pay the \$75 for Athletic Insurance. It is strongly recommended to pay the \$10 Tryout Fee initially and pay the remaining \$65 once the student makes a roster. This can be paid through SchoolCashOnline.com.

For more information about a particular sport, you should contact that team's coach. On the school's site, you can find a list of all coaches with links to their emails as well as Google Classroom Codes for students to join. If you have any questions about Athletics, feel free to email the Athletic Director as well.

HELPFUL WEBSITES

- www.FHSAA.org for Florida High School Athletic Association information
- www.welh.palmbeachschools.org for Wellington High School information

For any athletic events and after-school activities only Clear Bags are accepted!!



JOIN THE WRESTLING TEAM

Anyone interested in joining the wrestling team should attend a brief meeting after school on Friday, August 18th in the media center.

The 2022-23 boy's wrestling team won the District tournament for the 10th consecutive year, won the county tournament (3rd consecutive), and won the region tournament, qualified 9 athletes for the FHSA State Finals, and earned state all-academic team honors with a team unweighted GPA of a 3.2!

The 2022-23 girl's wrestling team won their 2nd consecutive district championship and their second consecutive county championship, placed third in the region, qualified three girls for the FSHAA State Finals, and earned state all-academic team honors with a team unweighted GPA of a 3.1!

We are looking for athletes of all sizes and never make cuts at any level! No experience is needed. Please email with any questions: travis.gray@palmbeachschools.org.



- ✓ Traffic School
Online or Live Classes
- ✓ Required Learners Permit Class
for New Drivers – Online
- ✓ Learn to Drive
Behind the Wheel Education
- ✓ Motorcycle Classes
Learn to Ride

safetycouncilpbc.org • (561) 845-8233



2025 Wellington Green Drive
561-784-5500
www.kaluzrestaurant.com





SAC

Wellington High School welcomes your involvement on our School Advisory Council (SAC). SAC is an essential line of communication between school staff, parents, students, and community liaisons. The SAC serves as a mechanism for participatory management and shared decision-making. The primary goal of SAC is to improve the education for all students. SAC members help establish educational priorities, assess school needs, and identify resources to meet those needs. SAC decisions are instrumental to the educational experience to students at WHS.

We encourage you to commit to attend SAC meetings on the third Tuesday of each month of the school year at 6:00pm in the Media Center. The first meeting will be held on August 15th. Check the school's website in the "Students and Parents" section or please contact Crystal Barletta for more information at Crystal.Barletta@palmbeachschools.org.

WOLVERINE CAFÉ UPDATE 2023-2024

Welcome Back, Wolverines!

Breakfast is served daily starting at 6:45am

ALL Meals are Free this school year!

We will be resuming ringing in all items that are on your plate.

Please Be Patient!

Please have your badge out & ready to scan when you arrive at the cashier station in order for the line to move as fast as possible!

ALL 2nd Meals will be PAID Ala Carte

\$1.80 to \$2.25 for an extra Entrée

\$.50 for Extra Juice, Fruit, Milk or Vegetable

Ala Carte Snacks and Drinks are \$.50 to \$2.00

Online Payments are available and are encouraged through School Cash online or www.palmbeachschools.org/sfs. If you have any

questions regarding on-line prepayments please contact the Parent Center support by phone at 866-961-1803.

We are looking forward to serving you.

Thank you,
Angie

Cafeteria Manager
#561-795-4925



DO YOU LOVE HORSES? TURN YOUR PASSION INTO A CAREER

B.S. BIOMECHANICAL SCIENCES WITH EQUINE STUDIES

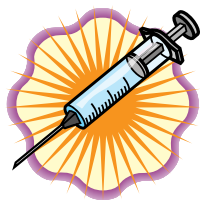
B.A. BUSINESS ADMINISTRATION WITH EQUINE STUDIES



561.478.5500
KeiserUniversity.edu

Equine Facility 2650 A. Road Loxahatchee Groves, FL 33470





PALM BEACH COUNTY CHILDHOOD IMMUNIZATION REQUIREMENTS SCHOOL YEAR 2023-2024

Florida Certificate of Immunization, Form DH 680 is the only document that the schools are permitted to accept as proof of immunization.

KINDERGARTEN – 12TH GRADE

- Diphtheria/Tetanus/Pertussis (DTaP) – 5 doses
- Polio (OPV or IPV) – 3, 4 or 5 doses (the last one after age 4 for K)
- Measles/Mumps/Rubella – 2 doses (usually given as 2 doses MMR)
- Hepatitis B (Hep B) – 3 doses

KINDERGARTEN – 11TH GRADE

- Varicella – 2 doses or provider verification of Chickenpox disease history on form DH 680

12TH GRADE

- Varicella – 1 dose or provider verification of Chickenpox disease history on form DH 680

7TH – 12TH GRADES

- Tetanus/Diphtheria/Pertussis booster (Tdap) – 1 dose

PRE-K PROGRAMS (AGE APPROPRIATE DOSES AS INDICATED)

- Diphtheria/Tetanus/Pertussis – (DTaP)
- Polio (OPV or IPV)
- Measles/Mumps/Rubella (MMR)
- Haemophilus Influenza type B (Hib)
- Hepatitis B (Hep B)
- Varicella (VZV)

LICENSED CHILD CARE FACILITIES AND FAMILY DAY CARE HOMES

Children entering or attending Licensed Child Care Facilities and Family Day Care Homes shall have received as many of the following age-appropriate immunizations as are medically indicated in accordance with the current Recommended Childhood Immunization Schedule:

- Diphtheria/Tetanus/Pertussis (DTaP)
- Polio (OPV or IPV)
- Measles/Mumps/Rubella
- Varicella
- Haemophilus Influenzae type B (Hib)
- Pneumococcal Conjugate (Pnevnar) for children age 2 to 59 months
- Hepatitis B (Hep B) (Recommended)



Parent Guide for Medications at School

The following is required before any medication can be taken by or administered to a child on school grounds:

1



A new **Authorization for Medication / Treatment Form** is required each school year and for any changes to the current order during the school year.



The form (available in the physician's office) must be completed by the **prescribing physician** for all medication.

The form must also have the **parent signature** completed in order for medication to be administered.



2



Prescribed medications must be in the **original container with a pharmacy label, not expired and matching the current physician's order**. When filling your prescription, request the pharmacy labels' expiration date state, **"See Manufacturer's Medication Expiration Date."**

Over-the-counter medications must also be in the **original unopened container, not expired and labeled with the child's name**.



Medication must be **delivered to the school by an adult**, not your child. A medication count and co-signature for the delivery and receipt of the medication will be required.

A **current photo** of the child is required for identification purposes and will be attached to the medication record. **The photo should be delivered with the physician's order and medication.**



3



School Health
Health Care District Palm Beach County



SCHOOL-WIDE POSITIVE BEHAVIOR SUPPORT

We have implemented two positive behavior programs at Wellington Community High School: Wellington Way and Character Counts. Students are being recognized for the positive choices they are making while they are on campus. Please make sure your child is following our Universal Guidelines every day they are on campus.



DRIVING PRIVILEGE

Students between the ages of 14 and 18 who have accumulated 15 unexcused absences within a period of 90 calendar days and failed to satisfy attendance requirements will be ineligible for the State of Florida driving privilege. Drivers' licenses will be suspended or not issued to students with 15 or more unexcused absences.

OBLIGATIONS, BOOKS, CHROMEBOOKS LOAN, TRUST RESPONSIBILITY

Wellington High School is committed to providing each student with necessary materials, textbooks and Chromebooks. Materials, textbooks and Chromebooks are on loan from the school and must be returned or replaced at the end of the term or school year. It is the responsibility of the student and parent/guardian to replace an item if it is lost, misplaced, or stolen. In some cases, an obligation will be applied if an item is damaged.

When a student has an obligation to the school, the student will not be permitted to participate in any extra-curricular activity (i.e. tryouts, athletics, clubs, honor societies, performances, prom, homecoming, etc.). In addition, seniors will not be permitted to participate in any senior activities or the graduation ceremony with an outstanding obligation.

If a student locates a book or item that had previously been reported lost and for which restitution was made, the school will issue a refund if the student produces a receipt for money paid. Refunds are issued by the bookkeeper. Obligations may be paid in the front office during lunch.



PARENT VOLUNTEER OPPORTUNITIES

The Parent Volunteer Opportunities program provides a mechanism for parents to be actively involved in the center environment and a way to become more familiar with procedures and activities while enhancing and enjoying the fellowship of children and staff. On-line registration is available at the point of entry. Make sure you sign-in and sign-out to earn volunteer hours. If you have any questions please contact Jennifer.M.Diaz@palmbeachschools.org.

PARENT INVOLVEMENT

Research shows that children are more successful when their parents are involved in their classroom experience. Volunteering in your child's class is one way to help meet this goal. Please take the time to determine where you would like to volunteer this year. Your time and efforts will be well spent while enriching the children's learning experience.



Botox/Dysport • Dermal Fillers
Hormone Replacement Therapy for Men & Women
Growth Hormone • IV Vitamin Therapy • Medical Weight Loss
Facials and Skincare • PRP • Microneedling

4EverYoungWellington.com

561-220-3771

10620 W. Forest Hill Blvd., Suite 50
Wellington, FL 33414

McCAFFREY
ORTHODONTICS

BOARD-CERTIFIED ORTHODONTIST SPECIALIZING
EXCLUSIVELY IN INVISALIGN AND BRACES FOR
CHILDREN & ADULTS

561-964-5200
6736 Forest Hill Blvd., West Palm
Beach, FL 33413
www.seaofsmiles.com
mo@seaofsmiles.com

DIAMOND
JEWELRY
PROVIDER
2022

Google
★★★★★

COMPLIMENTARY CONSULTATIONS!

An Honest Difference Since 1983

Buckeye Plumbing
Lic. No. CFC025553

All Plumbing, Backflow
and Hot Water
Heater Services

561-BUCKEYE
(561-282-5393)

BUCKEYEPLMG.COM

Study Early Childhood Education

SOUTHEASTERN
COLLEGE

f Instagram

561.433.2330
SEC.EDU





FROM THE DESK OF YOUR SCHOOL NURSE

STUDENT VAPING: A HUGE IMPACT ON HEALTH OF OUR YOUTHS

"Vaping is a gateway for nicotine dependence for today's youth. Statistics show an increase in vaping in middle school aged children by 50 percent and high school aged children by 80 percent in 2018. The use of vaping brings on new and unknown risks. The risks include unknown diseases (not just cancer) of the lungs and heart as well as any other organs affected by exposure to nicotine, hard metals, and the possibility of other harmful chemicals."

— Dr. David Shersher, thoracic, lung and esophageal surgeon, MD
Anderson Cancer Center at Cooper University Hospital

The following link is a great resource from the CDC:

https://www.cdc.gov/tobacco/basic_information/e-cigarettes/index.htm

STUDENT ATTENDANCE

Wellington High School's philosophy is that school attendance is essential to student learning. Absenteeism, excused or unexcused, regardless of the reason, negatively affects the continuity of the learning process.

A student is considered absent when he/she misses 50% or more of the class period. To excuse an absence, students must bring their excuse note to the **Grade Level Support Center** between 7:00 AM and 7:22 AM following the absence. **Faxes and phone calls will not be accepted. Grade Level Support Center** will not accept notes after 7:22 AM to avoid tardiness to class. There will be no exceptions. Students who do not have a 1st period must bring their excuse note to the **Grade Level Support Center** prior to the start of their first class following the absence.

The following information is to be included on notes from parents.

- Printed First and Last Name of the Student
- Student Identification Number
- Dates missed including specific periods
- Reason for absence (see note below)
- Telephone Number for Parent/Guardian
- Parent/Guardian Signature

Per state law and district policy, students who accumulate more than 10% of absences per semester, will be required to pass the semester exam in order to receive credit for the course. Also, a student between the ages of 14 and 18 who accumulates 15 unexcused absences will have his/her driver's license suspended by the Department of Highway Safety and Motor Vehicles.



WHS WEB SITE

Please take the time to check out our dynamic school web site:

<https://welh.palmbeachschools.org/>

This is an excellent way to keep students, parents, and staff updated on school events, policies, and news. Selected textbooks are also available on-line. Information can be found on sports, activities, clubs and news. Take advantage of our site and explore the areas to assist you in making the high school experience the best ever!

ESOL REGISTRATIONS

To register an ESOL student, please call the Grade Level Support Office at (561) 795-4915 starting August 4th to schedule an appointment. Thank you!

Para inscribir a un estudiante ESOL, favor de llamar a la Oficina de apoyo de nivel de grado al (561) 795-4915 a partir del 4 de agosto para hacer una cita. ¡Gracias!

Pou enskripsyon nan ESOL elèv yo, tanpri rele Biwo Sipò Nivo Klas a nan (561) 795-4915 kòmanse Out 4 nan orè yon randevou. Mèsi!

PARENT ALERT

Please double check that your child has not blocked the school phone number from your home number. On a number of occasions where an emergency required us to make a quick parental contact, we were unable to provide this service to you.



1000-3 State Road 7
WELLINGTON



(561)-615-1255 | www.acfp.com

561-290-7258

Salt
THE SPA

FLOAT POD | SALT ROOM | MASSAGES
INFRARED SAUNA | FACIALS | NAIL CARE
WAXING | TEETH WHITENING

@SALTTHESPA

SALTTHESPA.COM

3975 ISLES VIEW DR. #106 | WELLINGTON

JOIN US TUESDAYS for BINGO
and WEDNESDAYS for TRIVIA
from 7pm to 9pm



**BUFFALO
WILD
WINGS**

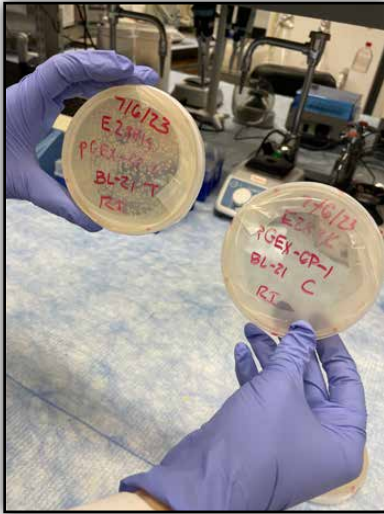
\$5 OFF
Purchase of \$25
or more

2837 S State Road 7 • Wellington • 561.383.8527

Limit one coupon per person, per visit. Must present original coupon; no photocopies. Not for resale. Not valid with any other discounts, offers or coupons. Valid at location listed above. No cash value. Excludes tax. Excludes alcohol. Code: 00-80. ©2023 Buffalo Wild Wings, Inc.

SCIENCE SPOTLIGHT

Written by Mrs. Holloway
AICE Biology AS and Biology teacher



Science spotlight on senior Rachel Ireland! This summer; Rachel attended University of Florida's Student Science Training Program. She was awarded an internship at the Caglayan Laboratory within the UF Department of Biochemistry and Molecular Biology where she spent 8 hours a day working in the lab. Currently, she is working on detecting gene mutations, overexpressing proteins in bacteria, and analyzing mutated proteins in assays. Her research project focuses on how cells repair damage to DNA. More specifically, how a single mutation causes a change in the 288th amino acid sequence which leads to an important enzyme, DNA polymerase, unable to add the correct nucleotide. This research could lead to gene therapy treatments and a further understanding behind the genetic pathway in colon cancer patients. We are incredibly proud of Rachel in her problem-solving abilities, tackling challenging tasks with confidence and finding innovative solutions.



2023-24 WELLINGTON COMMUNITY HIGH SCHOOL PARKING CONTRACT

To qualify and maintain a Wellington Community High School Parking permit all parking policies, procedures and rules must be adhered to throughout the year. Please read and understand ALL rules policies as they pertain to your privilege to park on campus.

ALL STUDENTS MUST HAVE...

- MINIMUM 2.25 GPA
- MAINTAIN 90% ATTENDANCE
- MINIMUM OF 10 COMMUNITY SERVICE HOURS
- NO OBLIGATIONS

**DO NOT PAY
BEFORE APPROVED.
NO REFUNDS
WILL BE ISSUED**

Minimum Credit Requirements	10 th Grade	11 th Grade	12 th Grade
1 st Semester	10	13	21
2 nd Semester	12	16	Met ALL testing requirements for graduation

In addition to the District Rules and regulations, the following rules violations may result in the loss of a student's parking privilege and/or disciplinary action. Please make sure that all rules are adhered to for continuance of parking on campus.

Any of the following infractions may result in parking privileges either temporarily or permanently revoked.
The cost of the parking permit WILL NOT be refunded.

- Leaving Campus without **SIGNING OUT** is NOT permitted.
- No Drugs, alcohol or weapons of any kind are allowed on campus or stored in vehicles while on school grounds.
- Unauthorized vehicles are not permitted on campus.
- Handicap permits must be in the DRIVERS NAME and they must have parking application on file before parking on campus.
- Any inappropriate articles (bumper sticker, flags, etc.) on vehicles are NOT permitted.
- Boots cannot be removed from any car by unauthorized personnel.
- The parking decal/hang-tag must be on display and visible through the front windshield and the permit number easily viewed. ID's must also be visible when coming on campus.
- Violation of any traffic or criminal laws and/or School District school rules.
- Discourteous, reckless, or defiant road behavior.
- Exceeding speed limit by 5 MPH on campus.
- Unsafe acts, (i.e. riding on car hoods, bumpers, radiators, fenders, spinning wheels, burning rubber, running boards, etc.) will result in suspension of parking privileges.
- Students are not permitted to remain in parking lots or to sit in parked vehicles before school, during lunch or at the completion of the school day.
- Students are to park in their designated parking lots only. Students are not permitted to park in staff parking lot, visitor lots or in NON- Designated parking areas.
- Any student caught duplicating or falsifying a parking permit or transferring the permit to another person will lose their parking permit privileges.
- Any audio device or instruments from within the motor vehicle cannot be louder than necessary for the convenient hearing by persons inside the vehicle in areas adjoining the school.
- Students shall not use cell phones or other wireless devices while driving.
- Operators of motor vehicles, and passengers must use seat belts or child restraining devices as required by law.
- No student is allowed to ride in the back of a pick-up or flat-bed truck.
- If an accident occurs on campus and is not reported immediately to the administration by the student(s) involved, the student(s) will lose their parking privileges for the duration of the school year and/or duration of their enrollment at the school.
20. Enter the Student parking lot at the student entrance prior to 7:35AM. After 7:35AM, please use the main entrance.

Any of the following infractions may result in the loss of campus parking privileges either temporarily or permanently. The cost of the parking permit WILL NOT be refunded.

LOVE YOUR
FUTURE

South
UNIVERSITY®
West Palm Beach, FL

Pursue a healthcare degree:
Physical Therapist Assistant (AS)
Nursing (BSN)

*Grant is issued per credit hour, up to 12 hours and is only available for select programs for those who qualify. Programs, credential levels, technology, and scheduling options vary by school and are subject to change. Not all programs are available to residents of all U.S. states. South University, West Palm Beach, University Centre, 9801 Belvedere Rd., Royal Palm Beach, FL 33411.
© 2023 South University. All rights reserved. Financial Aid is available to those who qualify.

**Ask about the Southeastern
Florida Sunshine Grant**

You may qualify for **\$1,740 per quarter***
for a Bachelor's degree or **\$1,404 per quarter***
for an Associate's degree

Call 561.273.6498

Or scan the QR code to visit
SouthUniversity.edu/WestPalmBeach



GUIDANCE NEWS:FY23-24

WELCOME TO GRADE LEVEL SUPPORT CENTERS FOR 9TH & 10TH GRADERS AND ALPHABETICAL SERVICE FOR OUR 11TH & 12TH GRADERS!!

We are excited for the upcoming school year. Wellington High School looks to service our students through student support centers and will continue to prioritize our students' needs with grade-specific support centers for 9th and 10th grades. The assistant principals, deans, and counselors at both grade levels will work tirelessly to ensure that all underclassmen are graduation ready as they enter each new year.

We will continue alpha breakdown in grades 11th & 12th to provide a 2-year seamless, knowledgeable advising process for all. Students and parents will walk through the 2-year post-secondary preparation process from beginning to end with a single counselor beginning the junior year. Additionally, Ms. Louis is our college & career counselor. She will work directly with all senior students and parents as they navigate the college, scholarship, and financial aid application processes, as well as offer workshops and informational sessions throughout the fall, please find workshop dates below.

We are looking forward to working with our students this upcoming school year, and are excited about the added components of meeting you and your students' needs. We want to celebrate the success of our grade-level student support centers and thank the students and parents for working with us as we identify the best way to meet the academic, social, and emotional needs of our students.

STUDENT SUPPORT GRADE LEVEL CONTACTS

9th grade	10th grade	11th grade & 12th grades
Assistant Principal Magda Dominique Office: (561) 795-4933	Assistant Principal Mike Kozlowski Office: Janet Leon (561) 795-9323	Assistant Principal - 11th Dr. Eric Moore Assistant Principal - 12th Dr.Elizabeth Calvente-Torres Tonya Grant Office 11th Grade: Dalia Khalil (561)795-4915 Office 12th Grade: Yvette Thomas -(561) 795-4920
Discipline Dean Lee Tanton	Discipline Dean Mark Boretti	Discipline Dean Malissa McAuley
School Counselors A – L MeganDonnelley M – Z Laquania Avant	School Counselors A – L Travis Gray M – Z Julia Saye	School Counselors A - D Andrew Saperstein E – I Danielle Fairclough J – Ri 11th grade , J-Q 12th grade Randall Panckeri Ro – Z 11th grade , R-Z 12th grade Terry Roberto

Mrs. Claudia Gallardo – **E.S.O.I counselor for all English Speakers of Other Languages**
 Ms. Rosemyrtle Louis– **College & Career Counselor**

STUDENT SCHEDULES

Students are to report to their 1st-period class on the first day of school. Students will be directed to their 1st period of the day and receive their permanent schedule.

SCHEDULE CHANGES

- Schedule changes **cannot** be made on the first day of school as ALL counselors are still registering new students.
- Students must follow the schedule in 1st period on the first day of school. If a schedule is not available in 1st period, **the student is to report to the Media Center.**
- If students do not have a 1st or 2nd period class due to senior privilege, or dual enrollment, their schedule will be in the **media center.**

Students who require a schedule change because credit in a given course has already been earned, a prerequisite to a course has not been taken, or a student is missing a period, they will complete a schedule change request form, and their counselor will call them as received.

NOTICE: If you have requested an FLVS course and need a counselor's approval, counselors will be monitoring FLVS requests regularly.

IMPORTANT: No schedule changes will be made until after the 11-day count of school.



IMPORTANT

Students needing a parking pass or senior privilege must have 20 documented volunteer hours, be on track for graduation with credits and test requirements, and have earned their online credit (unless earning an A.I.C.E. diploma).

School Counseling



CONTACT US!



LAST CHANCE TO ENROLL ON OUR 2024 EDUCATIONAL TOUR TO GREECE & THE ISLANDS!

This is an amazing opportunity for your students, this tour will help them become global citizens and expand their knowledge of the world around them. Understand new people, places, and cultures. Discover more about themselves.

Our trip is scheduled for the summer of 2024. Please follow this link to enroll! You can final all trip details here: www.eftours.com/2562444we/.

Please email Ms. Jean with any questions rosemyrtle.louis@palmbeachschools.org.



SENIOR YEAR

- **College Workshop:**
- **Parent College Workshop:** 6:00 pm in Media Center
- August 31st- Intro to College 101
- September 28, 2023 FAFSA & Scholarship

- October 26, 2023 Which College is Best For You?
- College workshops will take place monthly to assist seniors with college applications. *For any questions, please contact Ms. Louis- Rosemyrtle. louis@palmbeachschools.org.*

SENIOR ADVICE

- Start College Applications early (**Applications open August 1st**)
- Begin drafting a resume, including academic, athletic, and extracurricular activities
- Take the SAT and/or ACT early
- Attend college fairs
- Participate in college information sessions
- Connect with your College & Career counselor
- Research financial aid and scholarship options
- If an application requires a counselor recommendation, please complete the "Counselor Recommendation Request Form." This form can be found on the "Counselor Corner" webpage on the Wellington High School website. Allow two weeks for the recommendation to be written. **Do not send a recommendation letter to the college if it is not required.**

NOTE: Florida's public universities **DO NOT** require letters of recommendation. Remember to follow the application directions closely and do not send information that is not requested. It will slow down the application process at the college campus. College applications for the upcoming freshmen class are usually available in July/August.

GRADE FORGIVENESS INFORMATION

Students may repeat any course taken in grades 9-12 for a grade forgiveness IF they earned a grade of "F" or "D" in a course. **Note:** High school courses taken in middle school may be forgiven if a grade of "C", "D", or "F" is earned.

Please contact your student's school counselor for more information.

BRIGHT FUTURES SCHOLARSHIP

Type	16 High School Course Credits ¹	High School Weighted Bright Futures GPA	College Entrance Exams by High School Graduation Year (ACT [®] /SAT [®])	Service Hours
FAS	4 - English (three must include substantial writing)	3.50	2021-22 Graduates: 29/1330	100 hours
	4 - Mathematics (at or above the Algebra I level)		2022-23 Graduates: 29/1330	
	3 - Natural Science (two must have substantial laboratory)			
FMS	3 - Social Science	3.00	2021-22 Graduates: 25/1210	75 hours
	2 - World Language (sequential, in same language)		2022-23 Graduates: 25/1210	

Seniors may begin to apply for the Bright Futures Scholarship after October 1st, 2023.

FAFSA and Bright Futures Workshop on September 28, 2023.

Please visit <http://www.floridastudentfinancialaid.org/ssfad/bf/> for more information.

*Students may also earn the Bright Futures scholarship via the AICE diploma and complete 100 hours of community service.

AFTER SCHOOL CO-ENROLL

An opportunity to make up a course will be in August, 2023 any student that needs to make-up a course, please contact your school counselor or reach out to Coach H-hernan.avila@palmbeachschools.org.



- All students must turn in to their grade level support secretary **20 hours** of community service documented with a non-profit organization **by the end of junior year.**
- The community service log sheet can be found on the school's website or in the student support centers.
- If you are taking voluntary public service during the day, you must complete 75 community service hours per semester; this is a for-credit course.

COMMUNITY SERVICE LOCATIONS

Wellington Library:

Teen Volunteer Opportunities
(561) 744-2301

Web Page: www.pbclibrary.org/using-the-library/get-involved/volunteer

Village of Wellington:

Gus Ponce (561) 791-4102
Email: gponce@wellingtonfl.gov

Peggy Adams Animal Rescue:

Adopt an animal

Web Page: <https://www.peggyadams.org/groupvolunteering>

DUAL ENROLLMENT AT PALM BEACH STATE COLLEGE AND FLORIDA ATLANTIC UNIVERSITY



- To participate in dual enrollment, students must have a minimum unweighted GPA of 3.0 and have "college-ready test scores" in English, math, and reading on the ACT, SAT or PERT.
- Students must also fill out an admissions application and attend a mandatory advising session through PBSC. All students should plan to meet with their school counselor to discuss the above procedures.

Dual Enrollment Required Test Scores

PSAT or SAT:	Reading: 24	Writing: 25	Math: 24
ACT:	English: 17	Reading: 19	Math: 19
PERT:	Reading: 106	Writing: 103	Math: 114



SCAN ME

SCHOOL COUNSELOR DIRECTORY

For any questions during the school year, please feel free to contact your school counselor directly. utilize the qr code to set an appointment or send an email!



WOLVERINE WATCH

Wellington Community High School
2101 Greenview Shores Blvd.
Wellington, FL 33414

Non-Profit Organization
US Postage PAID
Orlando, FL
Permit No. 2346

To Addressee or Current Resident

Inside This Issue

Opening of School Updates

Science Spotlight

Athletic News

Wolverine Café Updates

and more!

